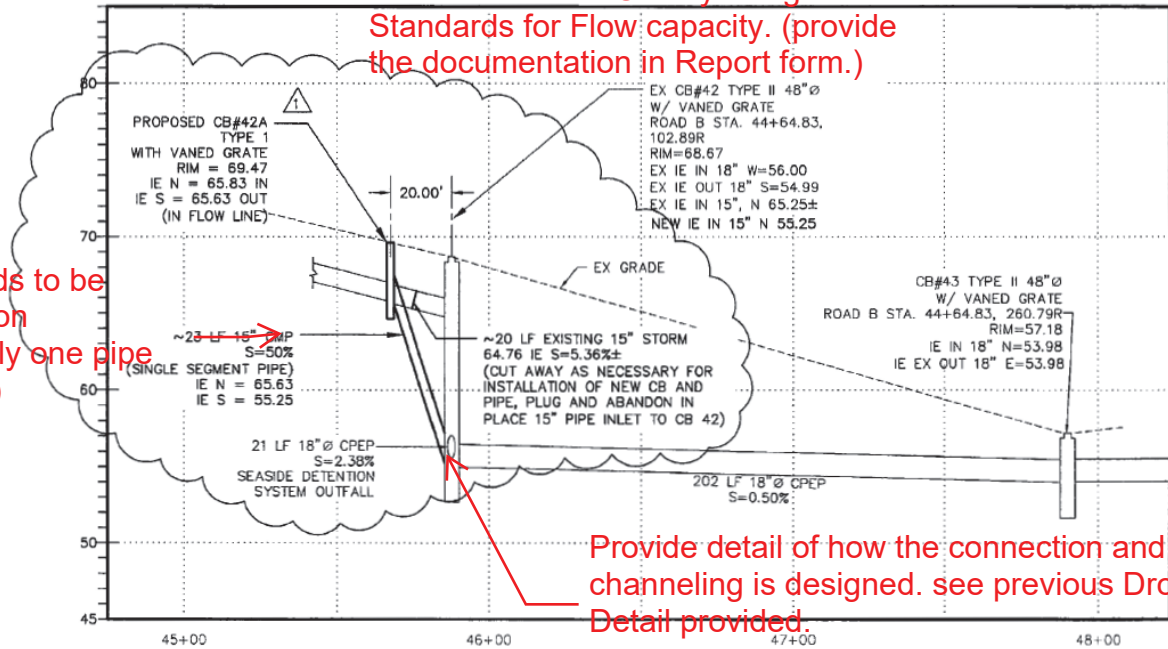


- 1.) Apply for an Addendum.
- 2.) Provide the Certification from the engineer regarding the revised design meets the County design Standards for Flow capacity. (provide the documentation in Report form.)

This needs to be Ductile iron (preferably one pipe segment)



Provide detail of how the connection and channeling is designed. see previous Drop Detail provided.

STORM PROFILE
△ (CB#1 TO CB#43 LINDVOG RD. DOWNSTREAM CONNECTION)
 SCALE: HORIZ. 1"=30'
 VERT. 1"=6'