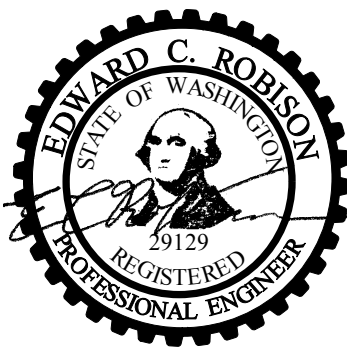


GLAZING NOTE:
FOR ALL WET SEALS USE
DOW CORNING® 995 SILICONE STRUCTURAL SEALANT



Sealed 21 April 2020
Edward C. Robinson, PE
10012 Creviston DR NW
Gig Harbor, WA 98329
253-858-0855, Fax 253-858-0856

CrystaliteTM Inc.
SKYLITES • SUNROOMS • RAILINGS

Crystalite Inc.
3307 Cedar St.
Everett, WA 98201
425-259-6000
800-666-6065 (USA)
425-259-6734 (fax)

These drawings are the exclusive property of Crystalite Inc. (Crystalite) and shall not, without Crystalite's consent, be retained, copied, duplicated or used for any purpose or purposes other than as pertain to Crystalite's own performance of the contract or subcontract (or portions thereof) in connection with which the drawings are submitted. Dimensions and other details shown in the drawings are subject to variation or change and Crystalite shall have no liability to any person ordering, purchasing or adapting related materials or work on the basis thereof.

GENERAL NOTES:

1. Curb must be installed per standard framing practices.
2. Curb must provide adequate structural support for all loads applied by skylight system, (including thrusting).
3. Curb must provide adequate structural anchorage of fasteners for skylight system. Field anchorage fasteners, supplied by installer.
4. All fasteners to be stainless steel or aluminum.
5. Exposed fasteners limited to perimeter.
6. All welds to be performed using the T.I.G. process.
7. All structural aluminum extrusions to be 6063 T6.
8. All other aluminum extrusions to be 6063 T5 minimum.
9. All structural members wall thickness minimum 0.125 inches.
10. Isolation between dissimilar metals supplied by installer.
11. Wet seal all splices. Use extra care in sealing frame splices.

NOTE TO CONTRACTOR/ARCHITECT:

1. With the return of one set of these drawings or "NOTIFICATION OF ACCEPTANCE" form marked "ACCEPTABLE AS DRAWN" or "ACCEPTABLE WITH THE NOTED CHANGES AND MODIFICATIONS" and signed, scheduled fabrication will be initiated immediately, based on the dimensions and design as indicated.
2. Crystalite Inc. does NOT include items marked "BY OTHERS" or N.B.C. (NOT BY CRYSTALITE)
3. Verify ALL curb/wall conditions are as shown in ALL Crystalite details.
4. All FLAT GLAZING over interior spaces or sunrooms must be a minimum of 2/12 pitch (9.46 deg.) or greater. Any FLAT GLAZING FRAME over an interior space or sunroom installed at less than a 2/12 pitch shall VOID WARRANTY by Crystalite, Inc.

GLAZING NOTES- PRESSURE CAP FASTENER SIZES

GLASS	THERMOCLEAR	BOLT SIZE
3/16" - 3/8"	OR 6 - 10MM	= 1"
1/2" - 5/8"	OR 16MM	= 1 1/4"
1"	OR 25MM	= 1 3/4"
1 1/4"	OR	= 2"
1 1/2"	OR	= 2 1/4"

FRAME COLOR: BRONZE ANO.

GLAZING TYPE: SEE NOTES ON A/2

MEASURE BY: BY CRYSTALITE

GLAZED BY: FIELD GLAZED

INSTALLATION BY: BY CRYSTALITE

REVISIONS:

DATE: DESCRIPTION:

JOB NAME:	DEALER NAME:	P.O. #	PROJECT #	SHEET #	DATE:	DRAWN BY:
	BMC WEST	9440NH	C-10812	1	10.28.19	ALEX S.

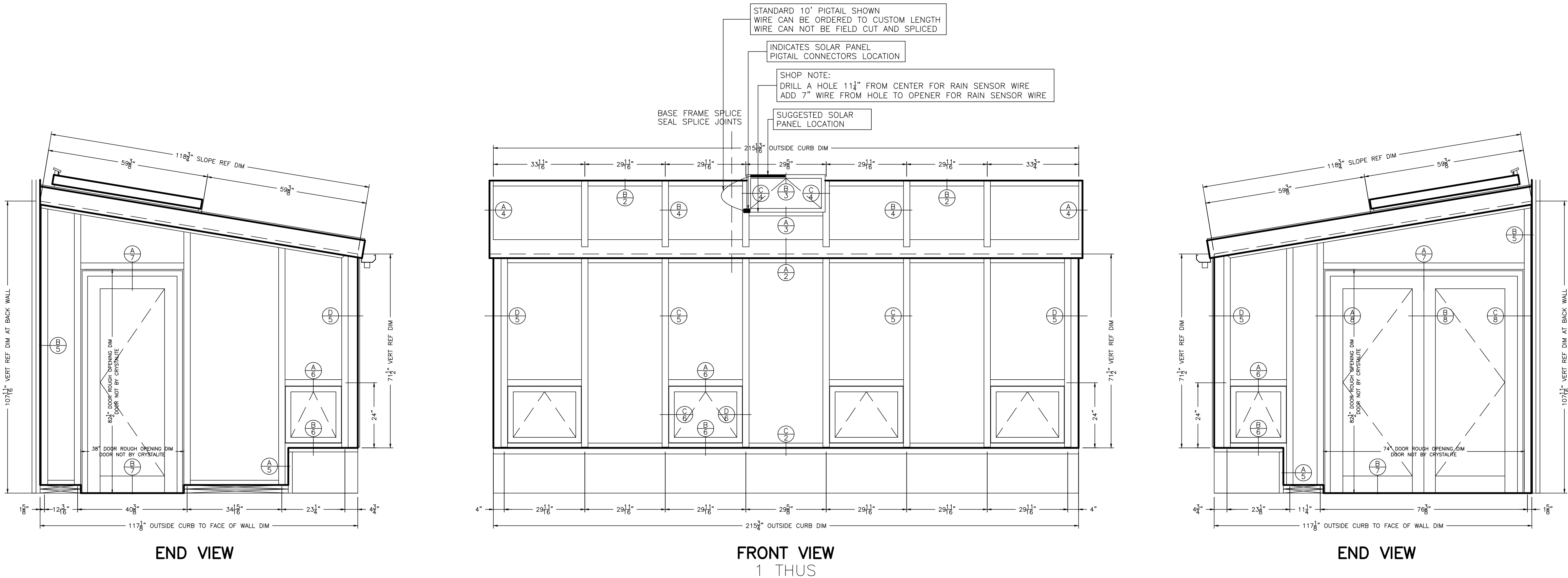
Must Comply With
All Washington
State Codes

Validity of permit. The issuance or granting of a permit shall not be construed to be a permit for, or an approval of, any violation of any of the provisions of the International Codes or any other ordinance of Kitsap County. Permits presuming to give authority to violate or cancel the provisions of the International Codes and ordinances of Kitsap County shall not be valid. IRC & IRC 105

Reviewed for code compliance
with IRC 2015
Kitsap County Building Department
GShapiro@co.kitsap.wa.us
05/29/2020

CHANGES
MUST Be Approved Prior
To Performing Work

Subject To Field Inspection



Crystalite Inc.
3307 Cedar St.
Everett, WA 98201

425-259-6000
800-666-6065 USA
425-259-6734 (fax)

These drawings are the exclusive property of Crystalite Inc. (Crystalite) and shall not, without Crystalite's consent, be retained, copied, duplicated or used for any purpose or purposes other than as pertain to Crystalite's own performance of the contract or subcontract (or portions thereof) in connection with which the drawings are submitted. Dimensions and other details shown in the drawings are subject to variation or change and Crystalite shall have no liability to any person ordering, purchasing or adapting related materials or work on the basis thereof.

- GENERAL NOTES:**
- Curb must be installed per standard framing practices.
 - Curb must provide adequate structural support for all loads applied by skylight system, (including thrusting).
 - Curb must provide adequate structural anchorage of fasteners for skylight system. Field anchorage fasteners, supplied by installer.
 - All fasteners to be stainless steel or aluminum.
 - Exposed fasteners limited to perimeter.
 - All welds to be performed using the T.I.G. process.
 - All structural aluminum extrusions to be 6063 T6.
 - All other aluminum extrusions to be 6063 T5 minimum.
 - All structural members wall thickness minimum 0.125 inches.
 - Isolation between dissimilar metals supplied by installer.
 - Wet seal all splices. Use extra care in sealing frame splices.

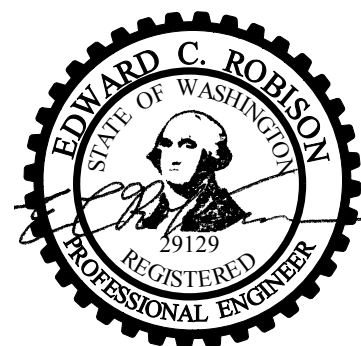
- NOTE TO CONTRACTOR/ARCHITECT:**
- With the return of one set of these drawings or "NOTIFICATION OF ACCEPTANCE" form marked "ACCEPTABLE AS DRAWN" or "ACCEPTABLE WITH THE NOTED CHANGES AND MODIFICATIONS" and signed, scheduled fabrication will be initiated immediately, based on the dimensions and design as indicated.
 - Crystalite Inc. does NOT include items marked "BY OTHERS" or N.B.C. (NOT BY CRYSTALITE)
 - Verify ALL curb/wall conditions are as shown in ALL Crystalite details.
 - All FLAT GLAZING over interior spaces or sunrooms must be a minimum of 2/12 pitch (9.46 deg.) or greater. Any FLAT GLAZING FRAME over an interior space or sunroom installed at less than a 2/12 pitch shall VOID WARRANTY by Crystalite, Inc.

GLAZING NOTES- PRESSURE CAP FASTENER SIZES			
GLASS	THERMOCLEAR	BOLT SIZE	
3/16" - 3/8"	OR	6 - 10MM	= 1"
1/2" - 5/8"	OR	16MM	= 1 1/4"
1"	OR	25MM	= 1 3/4"
1 1/4"	OR		= 2"
1 1/2"	OR		= 2 1/4"

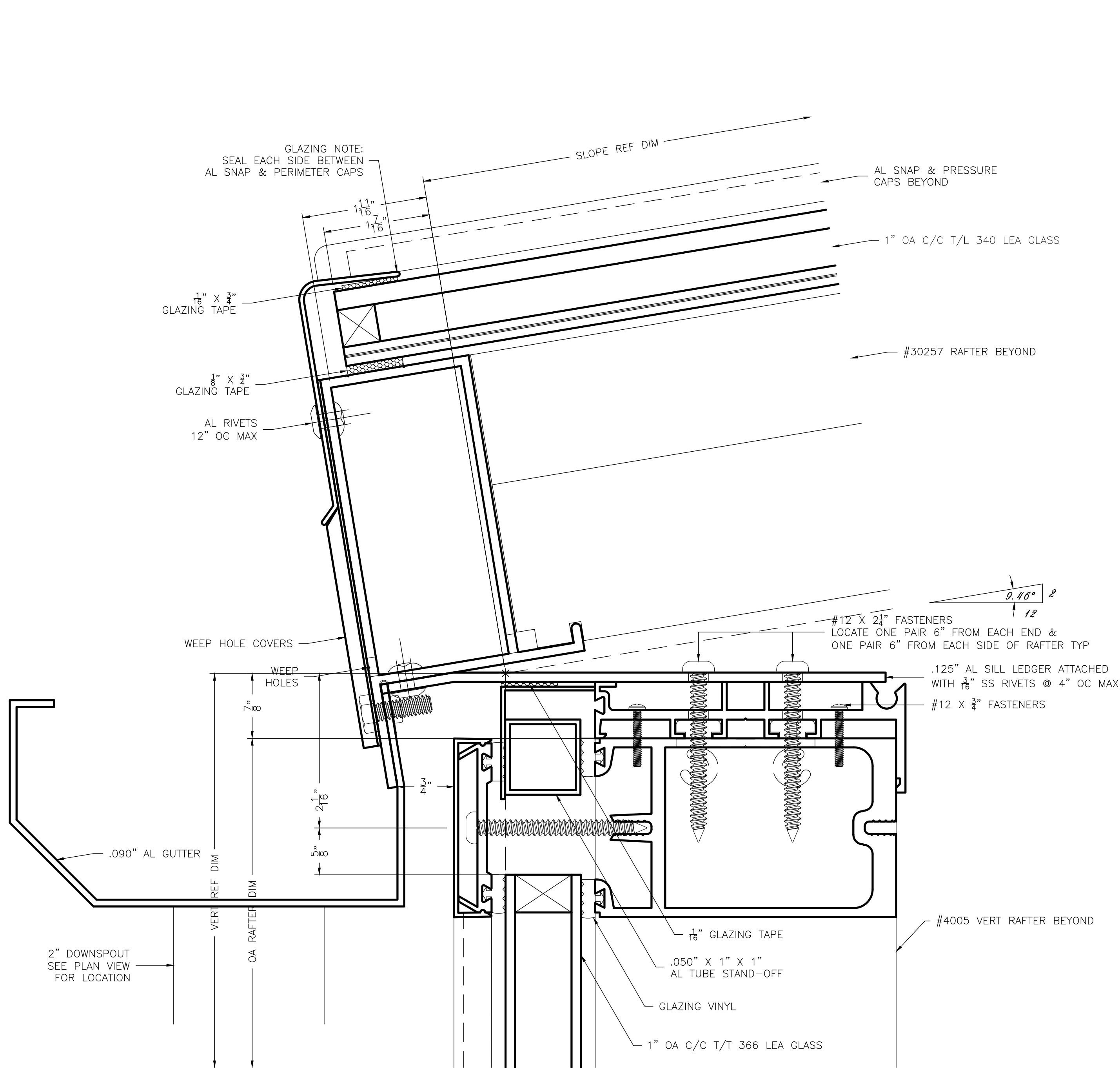
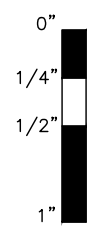
FRAME COLOR:	BRONZE ANO.
GLAZING TYPE:	SEE NOTES ON A/2
MEASURE BY:	BY CRYSTALITE
GLAZED BY:	FIELD GLAZED
INSTALLATION BY:	BY CRYSTALITE

REVISIONS:	
DATE:	DESCRIPTION:

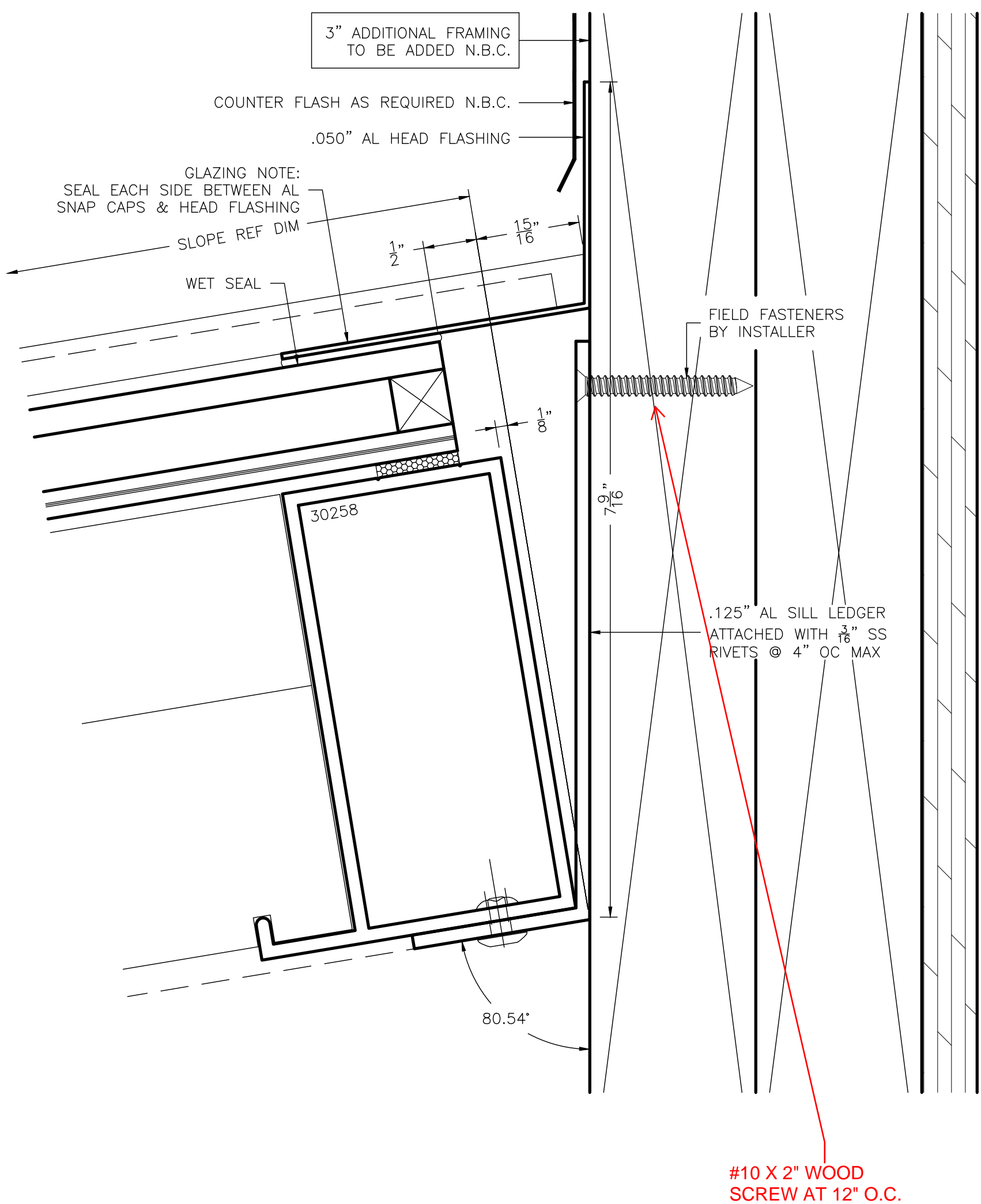
JOB NAME:	DEALER NAME:	P.O. #	PROJECT #	SHEET #	DATE:	DRAWN BY:
	BMC WEST	9440NH	C-10812	2	10.28.19	ALEX S.



Scaled 21 April 2020
Edward C. Robinson, PE
10012 Crevison DR NW
Gig Harbor, WA 98329
253-858-0855, Fax 253-858-0856



B/2 SKYLIGHT HEAD DETAIL



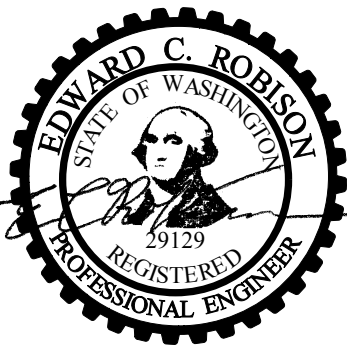
Reviewed for code compliance
with IRC 2015
Kitsap County Building Department
GShapiro@co.kitsap.wa.us
05/29/2020

Must Comply With
All Washington
State Codes

Subject To Field Inspection

As per first request
provide concrete slab
and curb detail, show
how bottom plate will
be connected to curb

Subject To Field Inspection



Sealed 21 April 2020
Edward C. Robison, PE
10012 Creston DR NW
Gig Harbor, WA 98329
253-858-0855, Fax 253-858-0856

Reviewed for code compliance
with IRC 2015
Kitsap County Building Department
GShapiro@co.kitsap.wa.us
05/29/2020

CHANGES
MUST Be Approved Prior
To Performing Work

#10 X 2" WOOD
SCREW AT 12" O.C.



Crystalite Inc.
3307 Cedar St.
Everett, WA 98201
425-259-6000
800-668-6065 (USA)
425-259-6734 (fax)

These drawings are the exclusive property of Crystalite Inc. (Crystalite) and shall not, without Crystalite's consent, be retained, copied, duplicated or used for any purpose or purposes other than as pertain to Crystalite's own performance of the contract or subcontract (or portions thereof) in connection with which the drawings are submitted. Dimensions and other details shown in the drawings are subject to variation or change and Crystalite shall have no liability to any person ordering, purchasing or adapting related materials or work on the basis thereof.

GENERAL NOTES:

1. Curb must be installed per standard framing practices.
2. Curb must provide adequate structural support for all loads applied by skylight system, (including thrusting).
3. Curb must provide adequate structural anchorage of fasteners for skylight system. Field anchorage fasteners, supplied by installer.
4. All fasteners to be stainless steel or aluminum.
5. Exposed fasteners limited to perimeter.
6. All welds to be performed using the T.I.G. process.
7. All structural aluminum extrusions to be 6063 T6.
8. All other aluminum extrusions to be 6063 T5 minimum.
9. All structural members wall thickness minimum .0125 inches.
10. Isolation between dissimilar metals supplied by installer.
11. Wet seal all splices. Use extra care in sealing frame splices.

NOTE TO CONTRACTOR/ARCHITECT:

1. With the return of one set of these drawings or "NOTIFICATION OF ACCEPTANCE" form marked "ACCEPTABLE AS DRAWN" or "ACCEPTABLE WITH THE NOTED CHANGES AND MODIFICATIONS" and signed, scheduled fabrication will be initiated immediately, based on the dimensions and design as indicated.
2. Crystalite Inc. does NOT include items marked "BY OTHERS" or N.B.C. (NOT BY CRYSTALITE)
3. Verify ALL curb/wall conditions are as shown in ALL Crystalite details.
4. All FLAT GLAZING over interior spaces or sunrooms must be a minimum of 2/12 pitch (9.46 deg.) or greater. Any FLAT GLAZING FRAME over an interior space or sunroom installed at less than a 2/12 pitch shall VOID WARRANTY by Crystalite, Inc.

GLAZING NOTES- PRESSURE CAP FASTENER SIZES

GLASS	THERMOCLEAR	BOLT SIZE
3/16" - 3/8"	OR 6 - 10MM	= 1"
1/2" - 5/8"	OR 16MM	= 1 1/4"
1"	OR 25MM	= 1 3/4"
1 1/4"	OR	= 2"
1 1/2"	OR	= 2 1/4"

FRAME COLOR: BRONZE ANO.

GLAZING TYPE: SEE NOTES ON A/2

MEASURE BY: BY CRYSTALITE

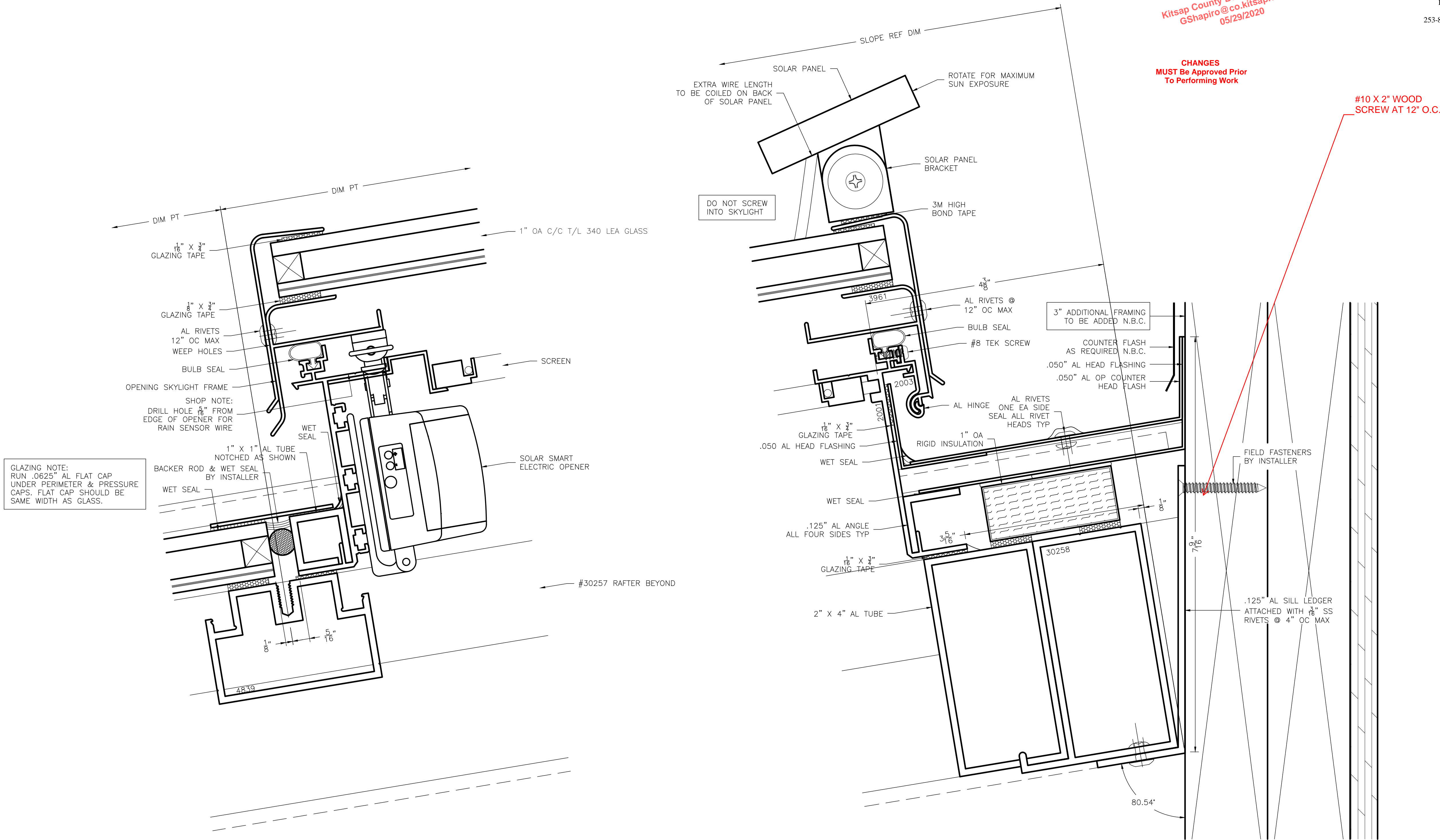
GLAZED BY: FIELD GLAZED

INSTALLATION BY: BY CRYSTALITE

REVISIONS:

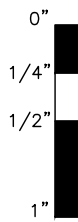
DATE:	DESCRIPTION:

JOB NAME:	DEALER NAME:	P.O. #	PROJECT #	SHEET #	DATE:	DRAWN BY:
	BMC WEST	9440NH	C-10812	3	10.28.19	ALEX S.



A/3 OPENER MUNTIN DETAIL

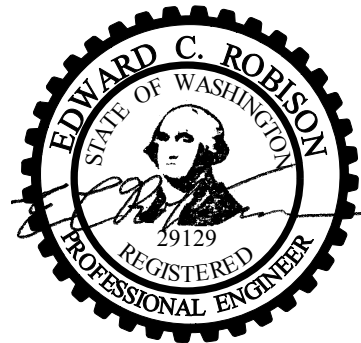
B/3 OPENER HEAD DETAIL



Reviewed for code compliance
with IRC 2015
Kitsap County Building Department
GShapiro@co.kitsap.wa.us
05/29/2020

CHANGES
MUST Be Approved Prior
To Performing Work

Subject To Field Inspection



Scaled 21 April 2020
Edward C. Robison, PE
10012 Creviston DR NW
Gig Harbor, WA 98329
253-858-0855, Fax 253-858-0856



Crystalite Inc.
3307 Cedar St.
Everett, WA 98201
425-259-6000
800-666-6065 (USA)
425-259-6734 (fax)

These drawings are the exclusive property of Crystalite Inc. (Crystalite) and shall not, without Crystalite's consent, be retained, copied, duplicated or used for any purpose or purposes other than as pertain to Crystalite's own performance of the contract or subcontract (or portions thereof) in connection with which the drawings are submitted. Dimensions and other details shown in the drawings are subject to variation or change and Crystalite shall have no liability to any person ordering, purchasing or adapting related materials or work on the basis thereof.

GENERAL NOTES:

1. Curb must be installed per standard framing practices.
2. Curb must provide adequate structural support for all loads applied by skylight system, (including thrusting).
3. Curb must provide adequate structural anchorage of fasteners for skylight system. Field anchorage fasteners, supplied by installer.
4. All fasteners to be stainless steel or aluminum.
5. Exposed fasteners limited to perimeter.
6. All welds to be performed using the T.I.G. process.
7. All structural aluminum extrusions to be 6063 T6.
8. All other aluminum extrusions to be 6063 T5 minimum.
9. All structural members wall thickness minimum 0.125 inches.
10. Isolation between dissimilar metals supplied by installer.
11. Wet seal all splices. Use extra care in sealing frame splices.

NOTE TO CONTRACTOR/ARCHITECT:

1. With the return of one set of these drawings or "NOTIFICATION OF ACCEPTANCE" form marked "ACCEPTABLE AS DRAWN" or "ACCEPTABLE WITH THE NOTED CHANGES AND MODIFICATIONS" and signed, scheduled fabrication will be initiated immediately, based on the dimensions and design as indicated.
2. Crystalite Inc. does NOT include items marked "BY OTHERS" or N.B.C. (NOT BY CRYSTALITE)
3. Verify ALL curb/wall conditions are as shown in ALL Crystalite details.
4. All FLAT GLAZING over interior spaces or sunrooms must be a minimum of 2/12 pitch (9.46 deg.) or greater. Any FLAT GLAZING FRAME over an interior space or sunroom installed at less than a 2/12 pitch shall VOID WARRANTY by Crystalite, Inc.

GLAZING NOTES- PRESSURE CAP FASTENER SIZES

GLASS	THERMOCLEAR	BOLT SIZE
3/16" - 3/8"	OR 6 - 10MM	= 1"
1/2" - 5/8"	OR 16MM	= 1 1/4"
1"	OR 25MM	= 1 3/4"
1 1/4"	OR	= 2"
1 1/2"	OR	= 2 1/4"

FRAME COLOR: BRONZE ANO.

GLAZING TYPE: SEE NOTES ON A/2

MEASURE BY: BY CRYSTALITE

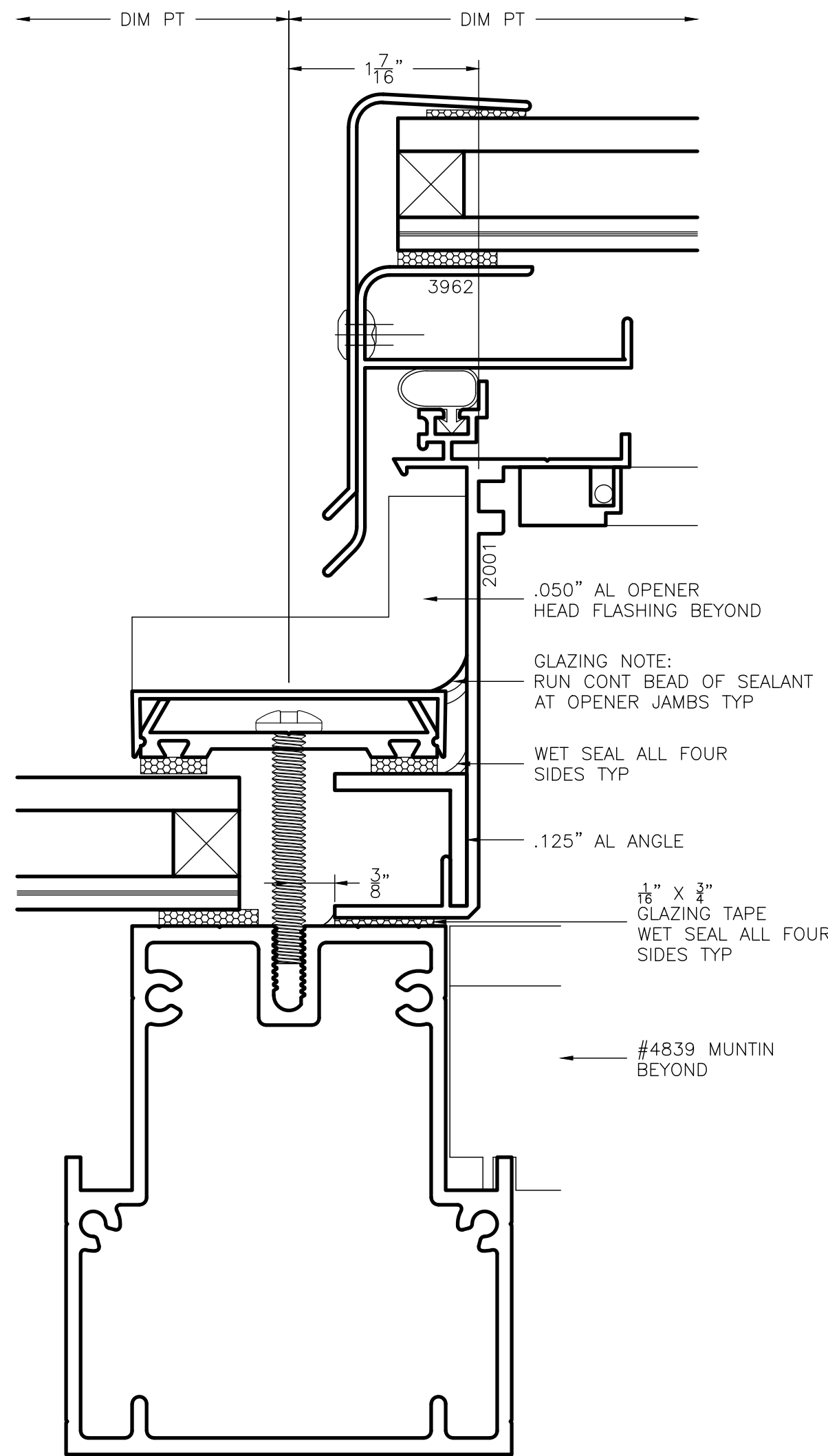
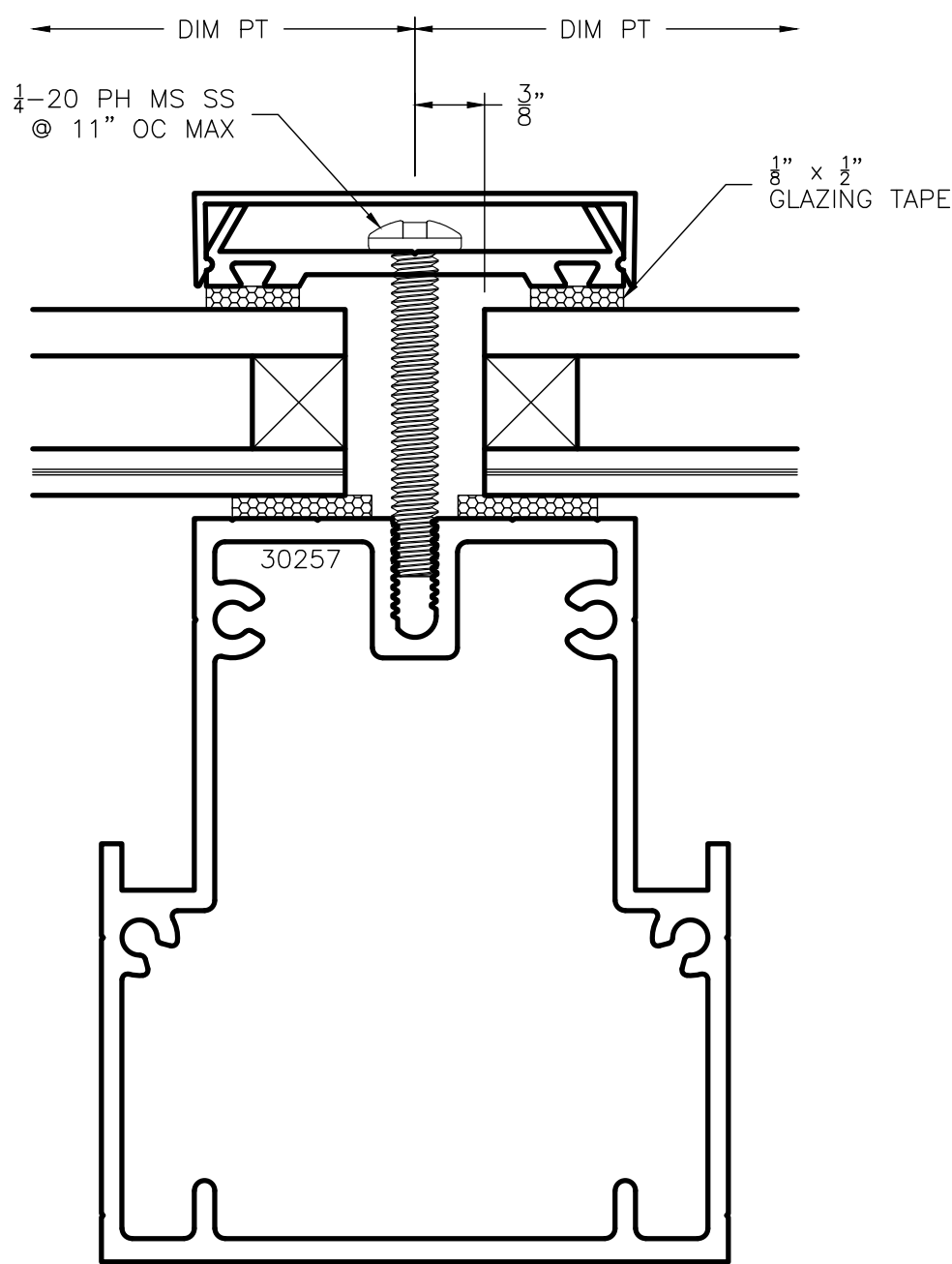
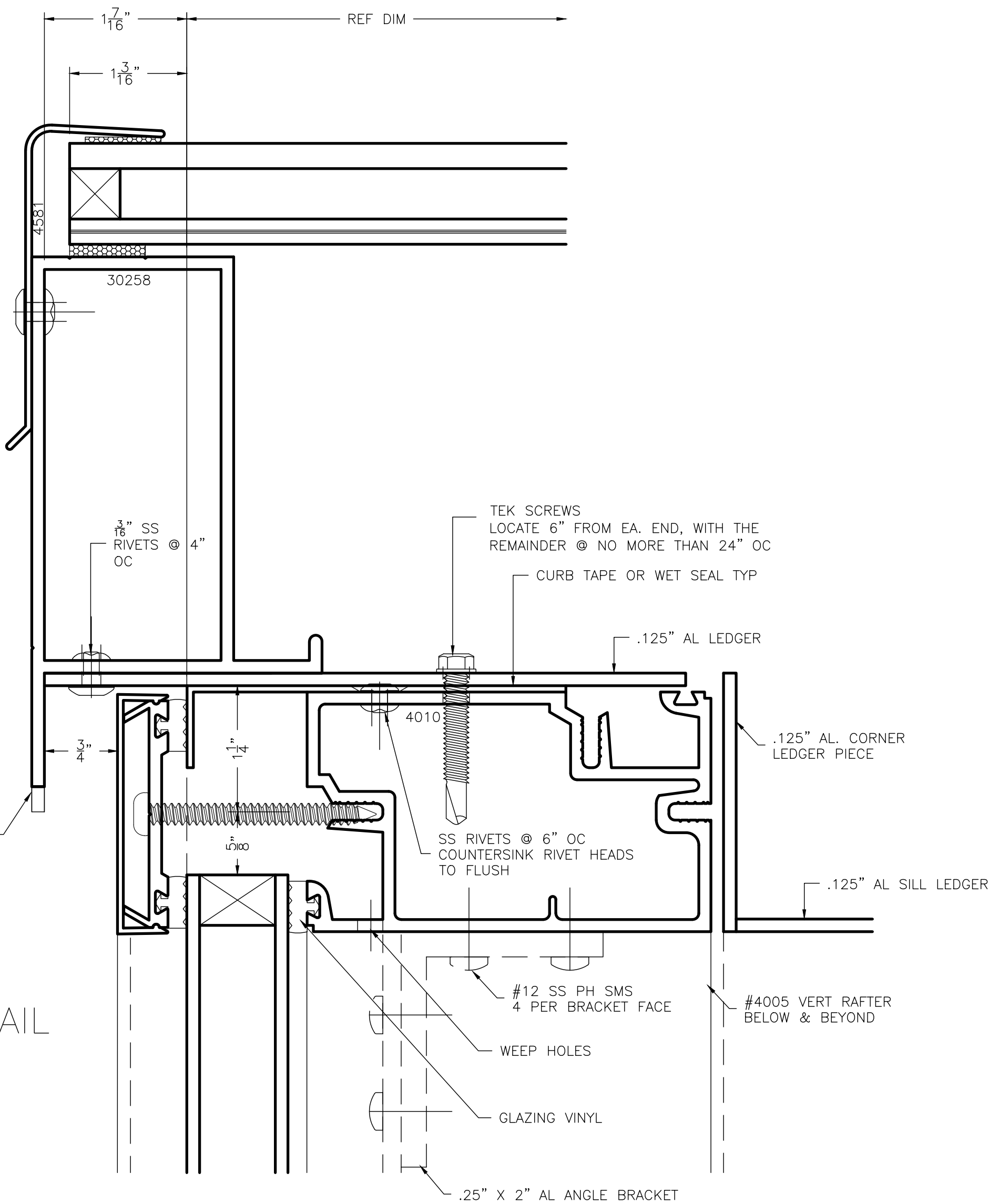
GLAZED BY: FIELD GLAZED

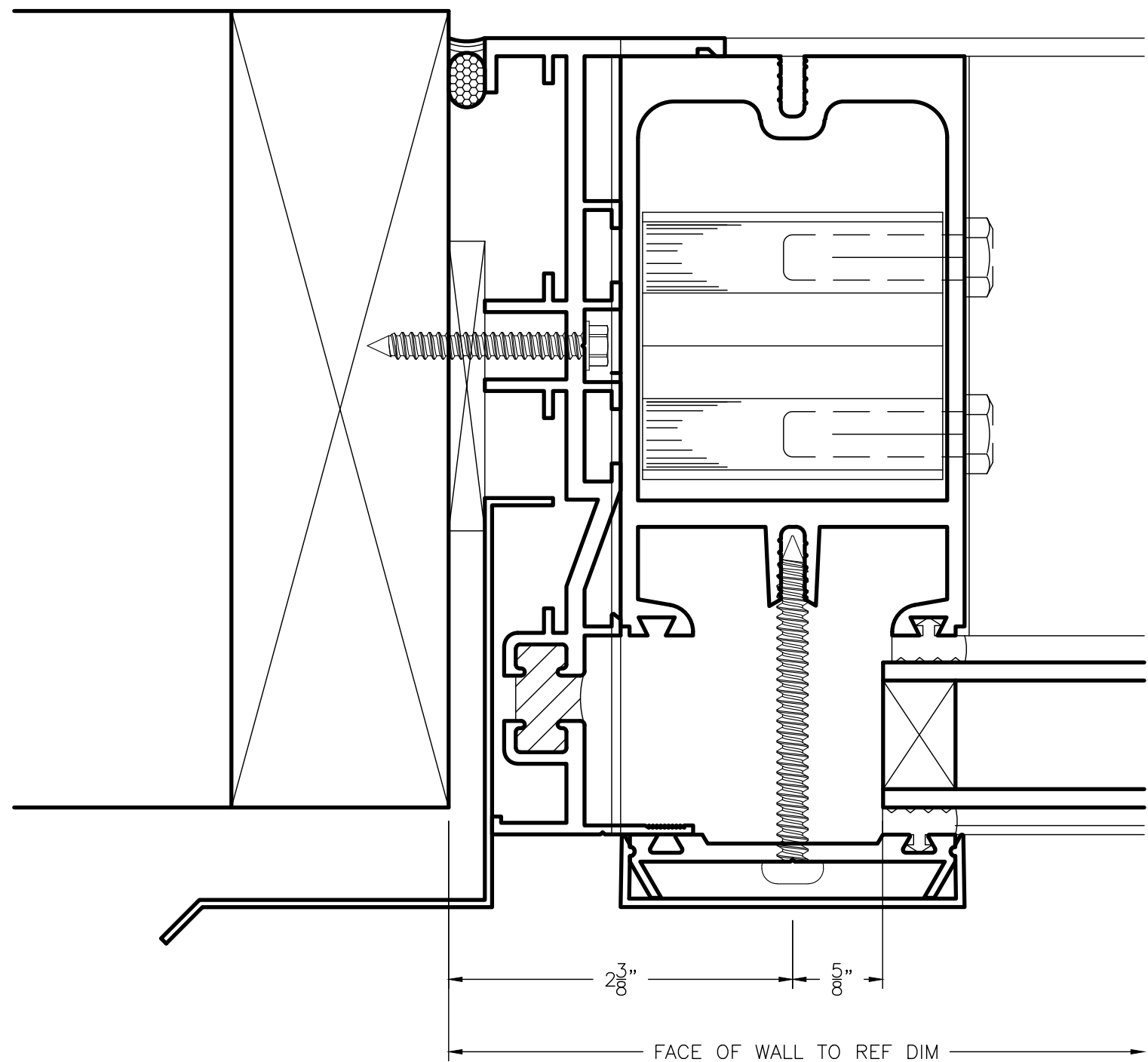
INSTALLATION BY: BY CRYSTALITE

REVISIONS:

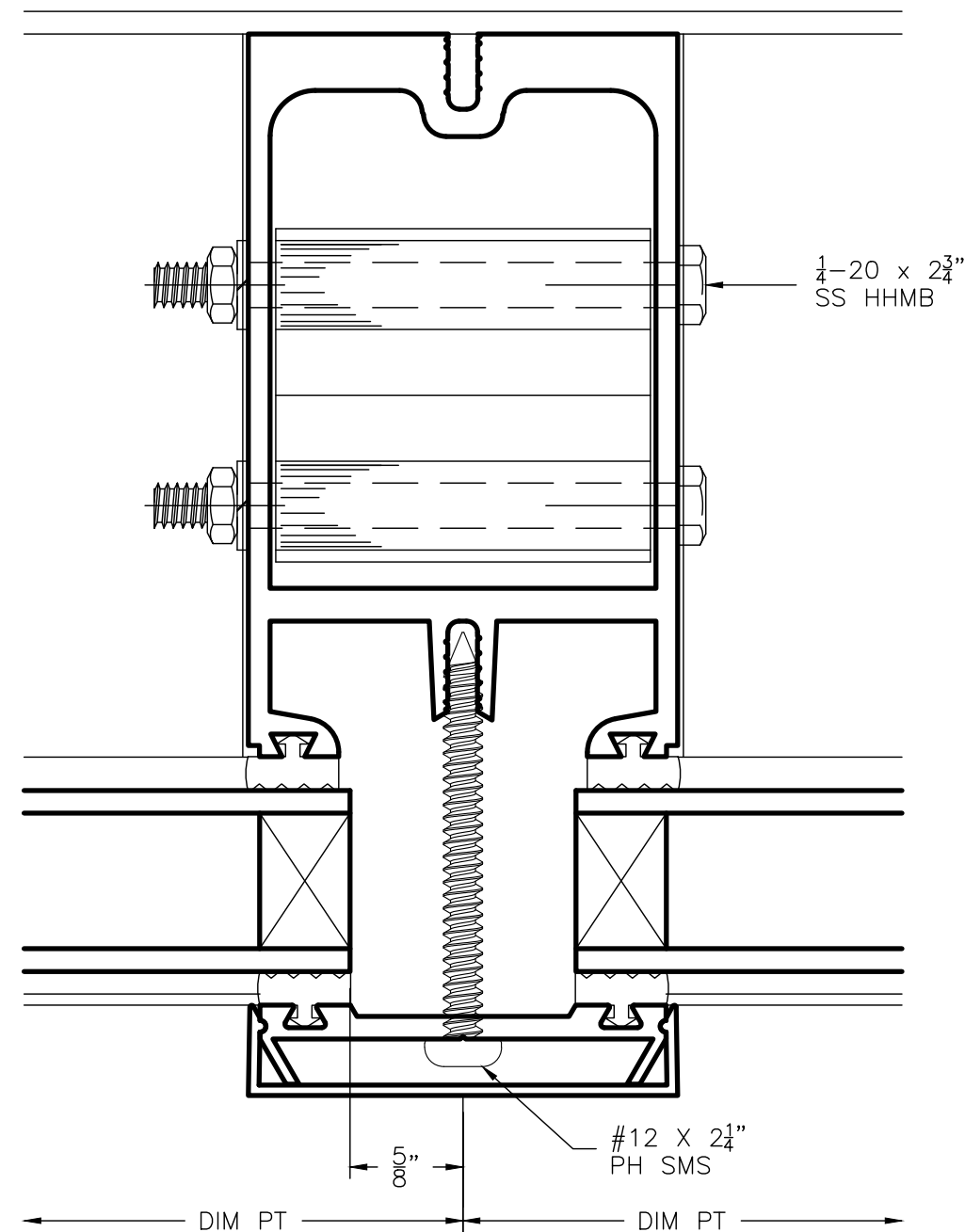
DATE: DESCRIPTION:

JOB NAME:	DEALER NAME:	P.O. #	PROJECT #	SHEET #	DATE:	DRAWN BY:
	BMC WEST	9440NH	C-10812	4	10.28.19	ALEX S.

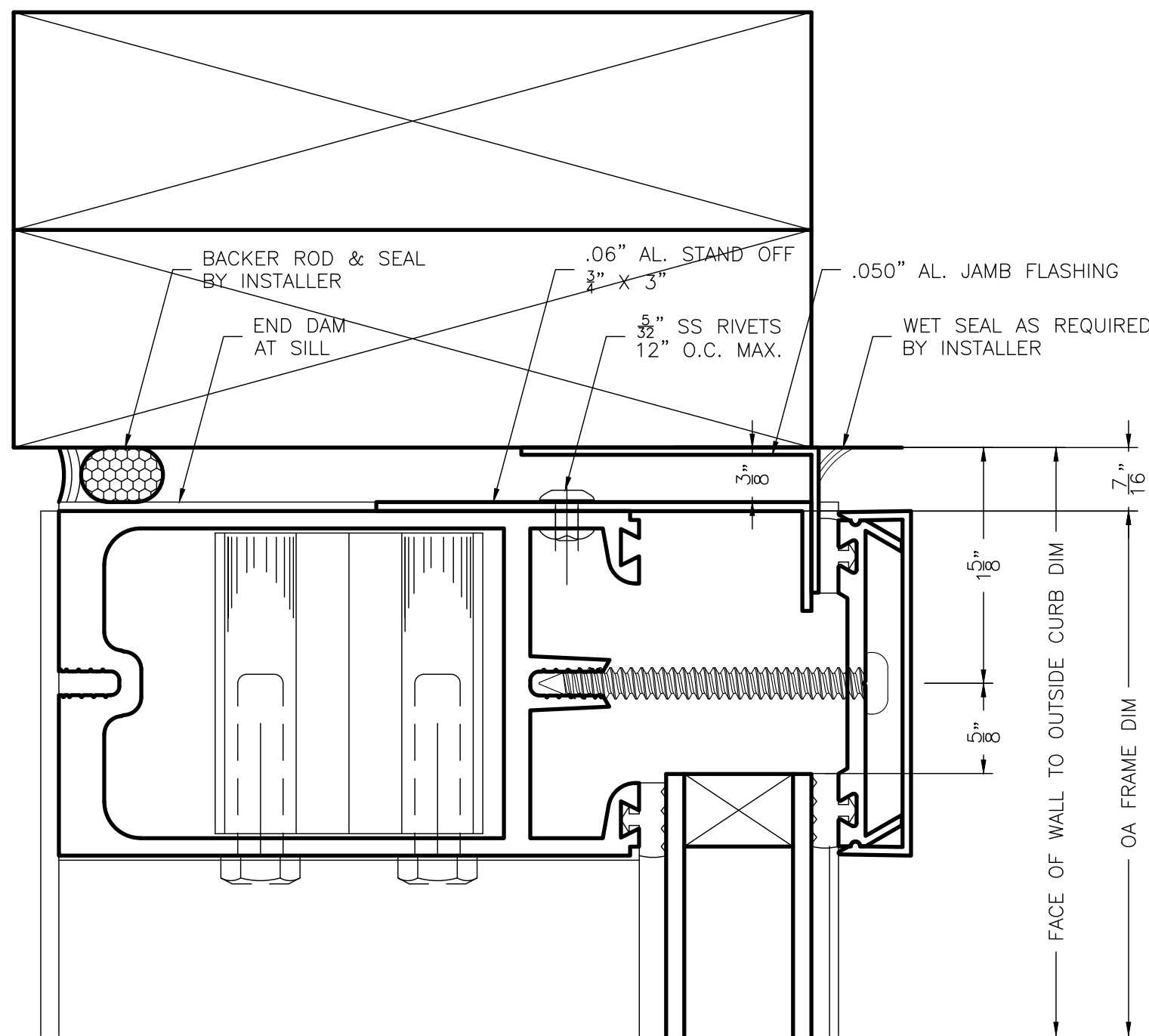




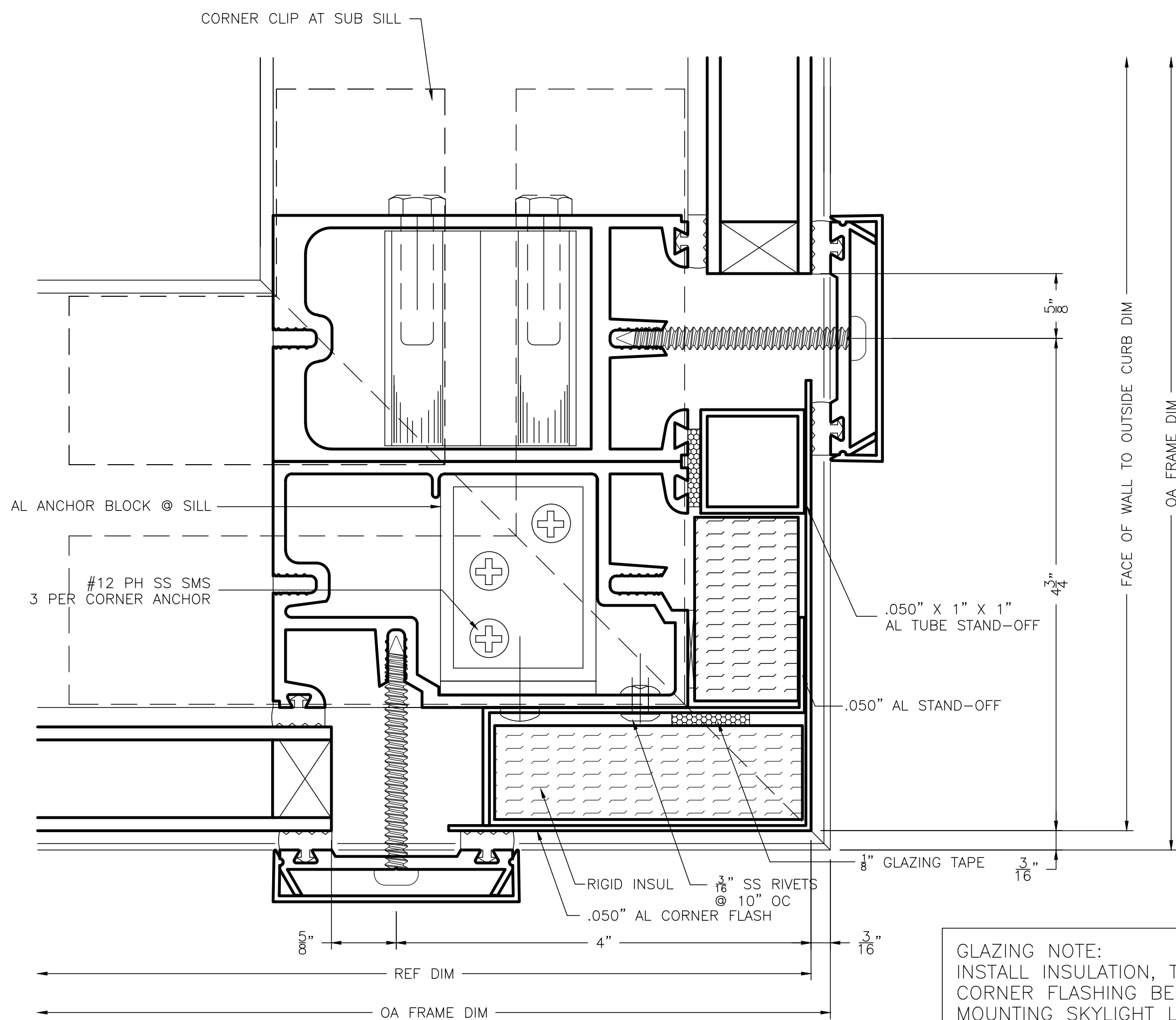
A-5 SUNROOM JAMB DETAIL



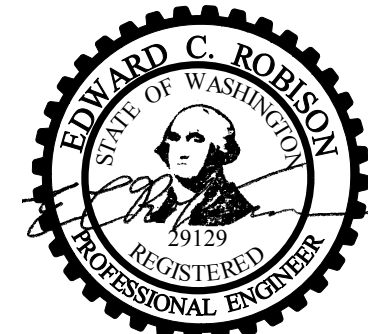
C-5 SUNROOM RAFTER DETAIL



B-5 SUNROOM JAMB DETAIL



D-5 SUNROOM CORNER DETAIL



Sealed 21 April 2020
Edward C. Robison, PE
10012 Creviston DR NW
Gig Harbor, WA 98329
253-858-0855, Fax 253-858-0856

Reviewed for code compliance
with IRC 2015
Kitsap County Building Department
GShapiro@co.kitsap.wa.us
05/29/2020

Subject To Field Inspection

CHANGES
MUST Be Approved Prior
To Performing Work



Crystalite Inc.
3307 Cedar St.
Everett, WA 98201

425-259-6000
800-668-6065 (USA)
425-259-6734 (fax)

These drawings are the exclusive property of Crystalite Inc. (Crystalite) and shall not, without Crystalite's consent, be retained, copied, duplicated or used for any purpose or purposes other than as pertain to Crystalite's own performance of the contract or subcontract (or portions thereof) in connection with which the drawings are submitted. Dimensions and other details shown in the drawings are subject to variation or change and Crystalite shall have no liability to any person ordering, purchasing or adapting related materials or work on the basis thereof.

GENERAL NOTES:

1. Curb must be installed per standard framing practices.
2. Curb must provide adequate structural support for all loads applied by skylight system, (including thrusting).
3. Curb must provide adequate structural anchorage of fasteners for skylight system. Field anchorage fasteners, supplied by installer.
4. All fasteners to be stainless steel or aluminum.
5. Exposed fasteners limited to perimeter.
6. All welds to be performed using the T.I.G. process.
7. All structural aluminum extrusions to be 6063 T6.
8. All other aluminum extrusions to be 6063 T5 minimum.
9. All structural members wall thickness minimum 0.125 inches.
10. Isolation between dissimilar metals supplied by installer.
11. Wet seal all splices. Use extra care in sealing frame splices.

NOTE TO CONTRACTOR/ARCHITECT:

1. With the return of one set of these drawings or "NOTIFICATION OF ACCEPTANCE" form marked "ACCEPTABLE AS DRAWN" or "ACCEPTABLE WITH THE NOTED CHANGES AND MODIFICATIONS" and signed, scheduled fabrication will be initiated immediately, based on the dimensions and design as indicated.
2. Crystalite Inc. does NOT include items marked "BY OTHERS" or N.B.C. (NOT BY CRYSTALITE)
3. Verify ALL curb/wall conditions are as shown in ALL Crystalite details.
4. All FLAT GLAZING over interior spaces or sunrooms must be a minimum of 2/12 pitch (9.46 deg.) or greater. Any FLAT GLAZING FRAME over an interior space or sunroom installed at less than a 2/12 pitch shall VOID WARRANTY by Crystalite, Inc.

GLAZING NOTES- PRESSURE CAP FASTENER SIZES

GLASS	THERMOCLEAR	BOLT SIZE
3/16" - 3/8"	OR 6 - 10MM	= 1"
1/2" - 5/8"	OR 16MM	= 1 1/4"
1"	OR 25MM	= 1 3/4"
1 1/4"	OR	= 2"
1 1/2"	OR	= 2 1/4"

FRAME COLOR: BRONZE ANO.

GLAZING TYPE: SEE NOTES ON A/2

MEASURE BY: BY CRYSTALITE

GLAZED BY: FIELD GLAZED

INSTALLATION BY: BY CRYSTALITE

REVISIONS:

DATE:	DESCRIPTION:

JOB NAME:

DEALER NAME: BMC WEST

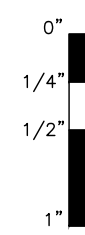
P.O. # 9440NH

PROJECT # C-10812

SHEET # 5

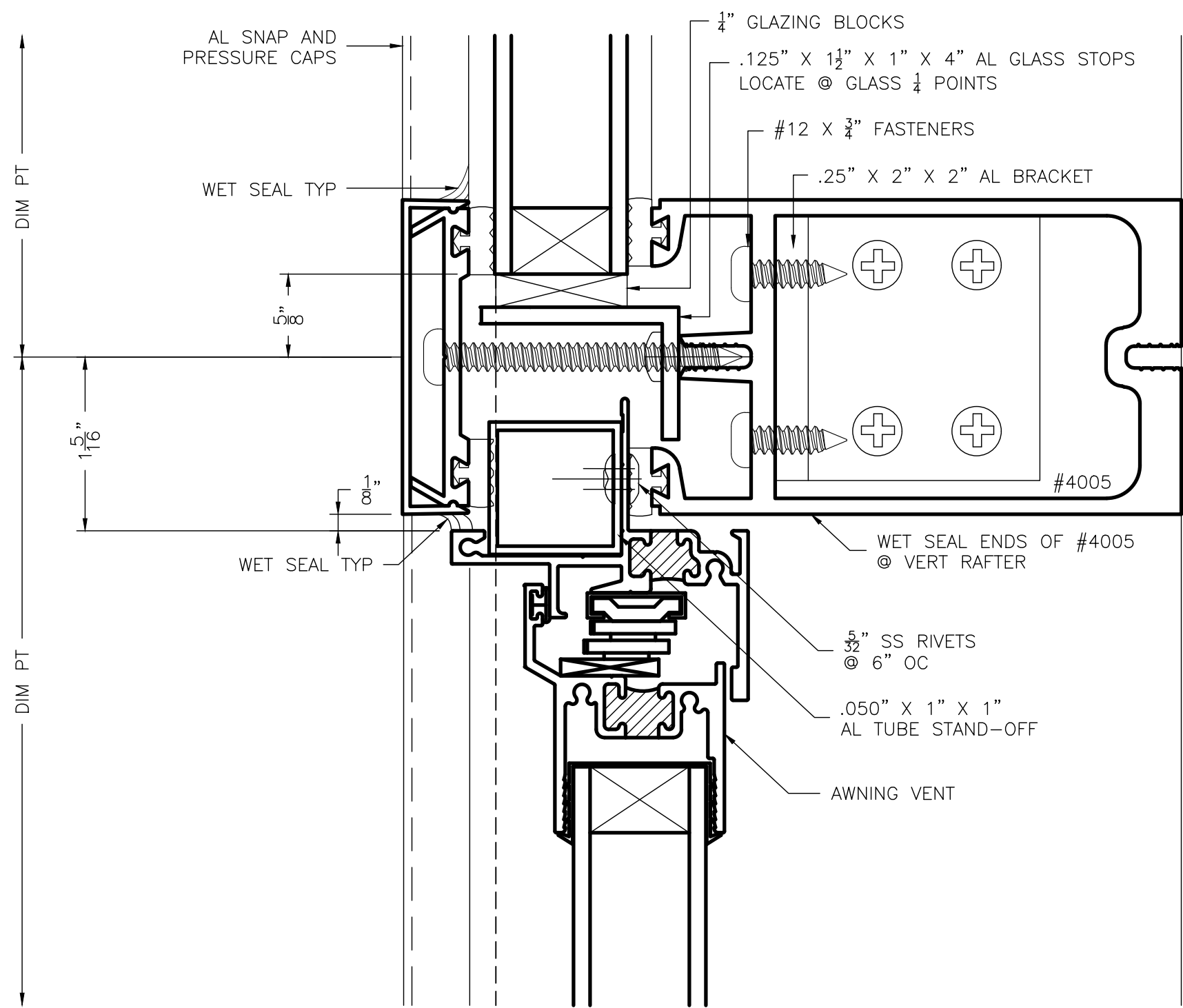
DATE: 10.28.19

DRAWN BY: ALEX S.



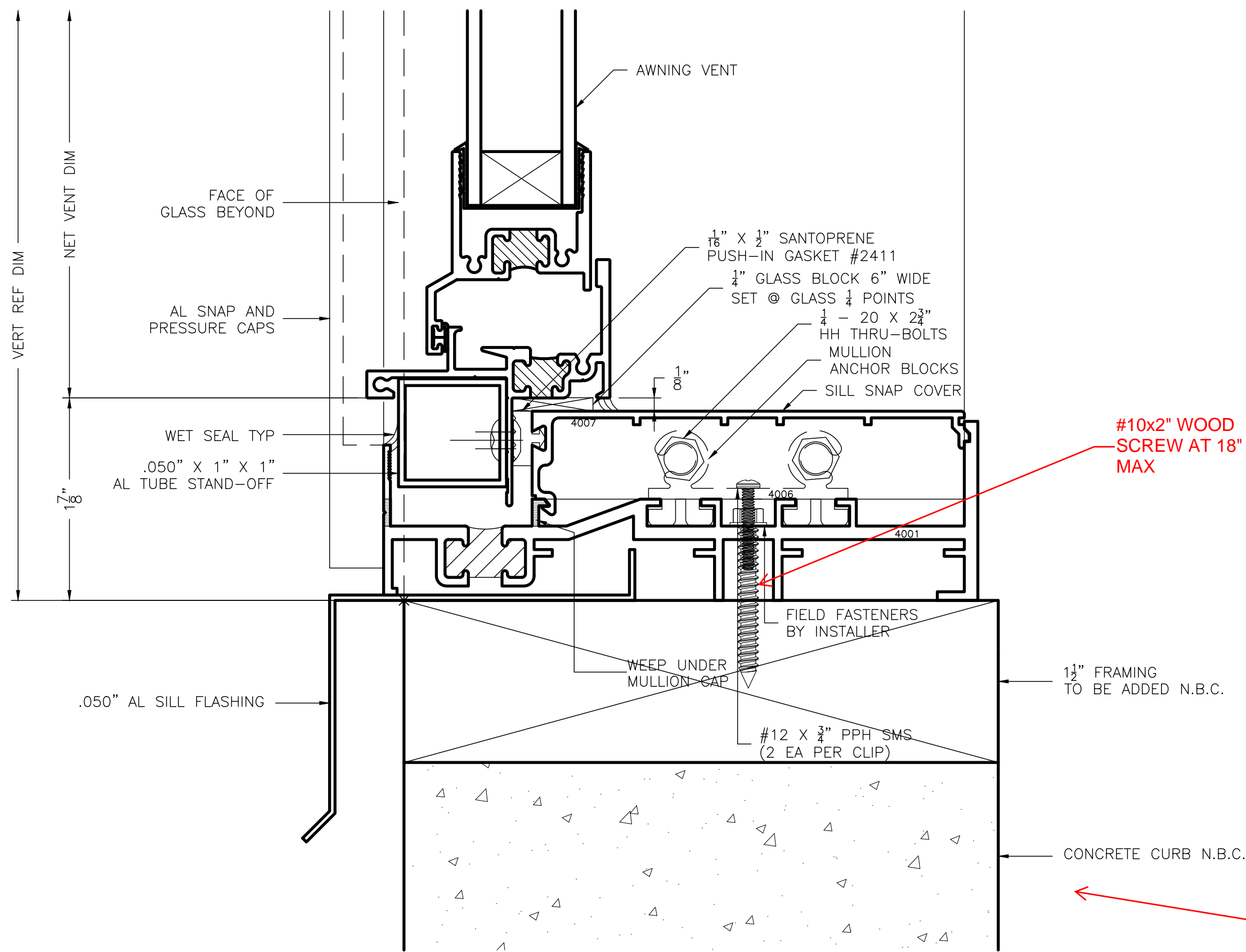
A
6

AWNING MUNTIN DETAIL



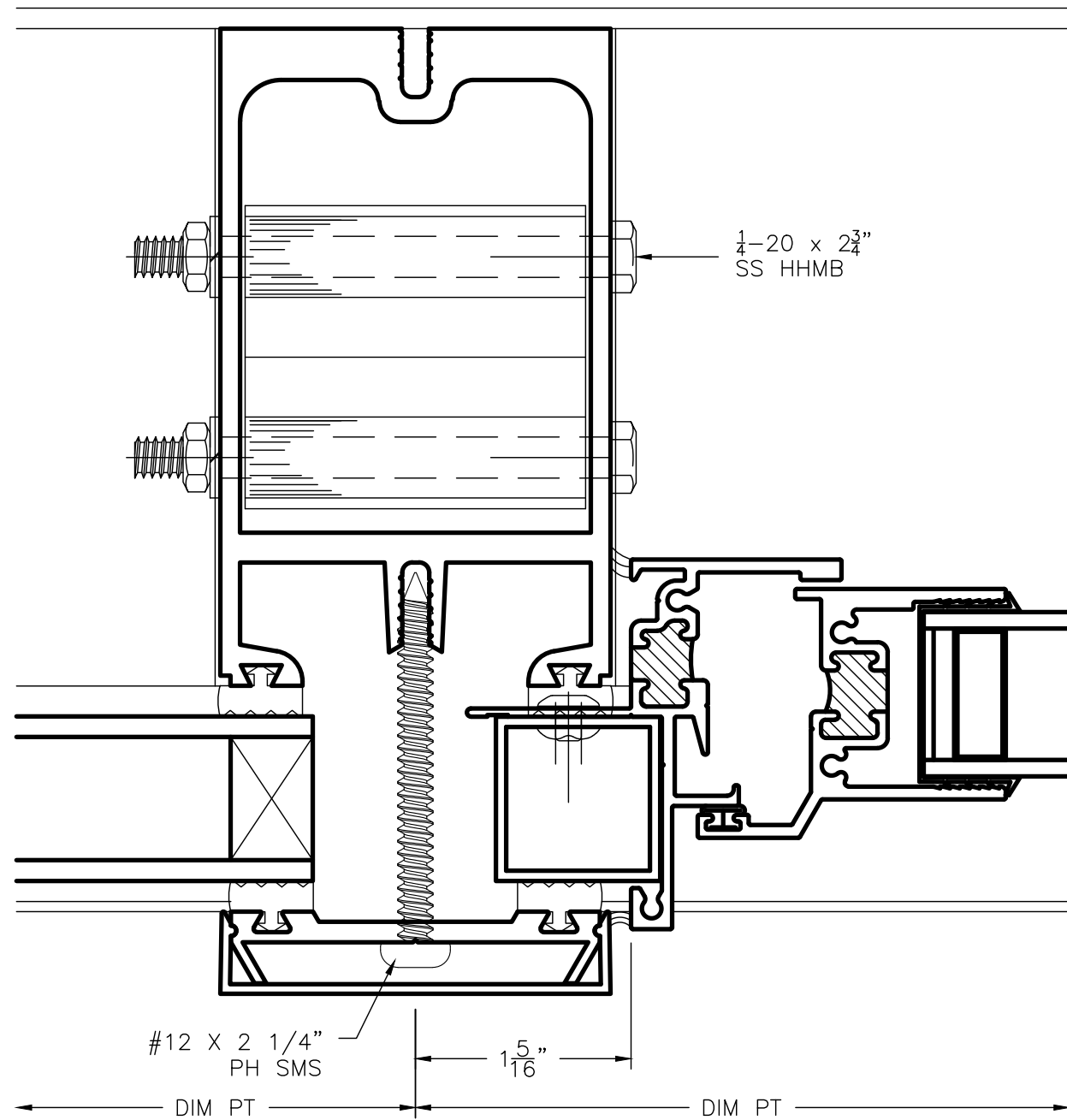
B
6

AWNING SILL DETAIL



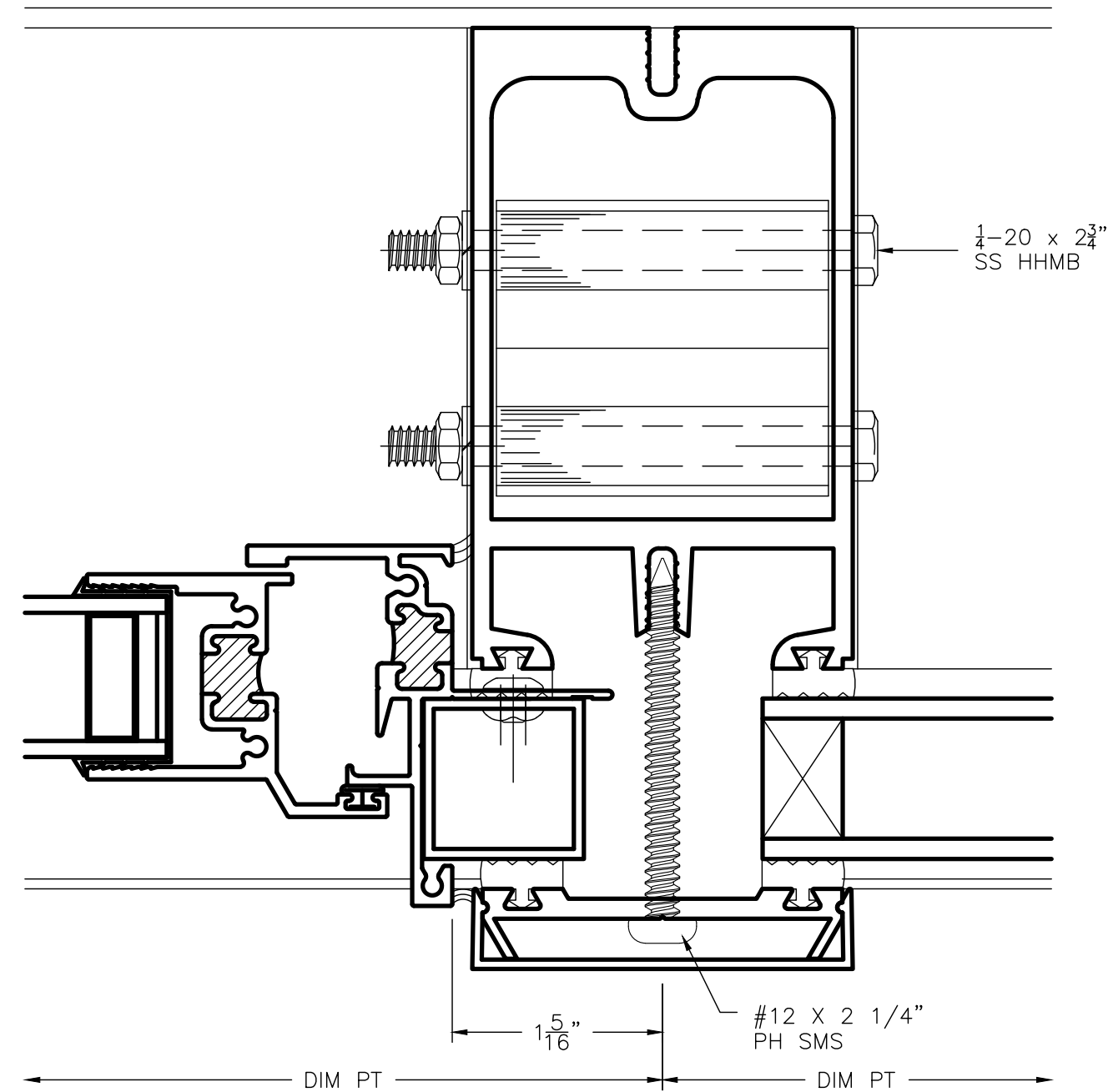
C
6

AWNING JAMB DETAIL



D
6

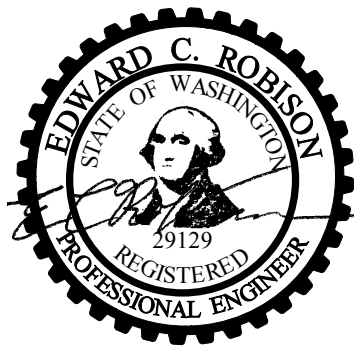
AWNING RAFTER DETAIL



Reviewed for code compliance
with IRC 2015
Kitsap County Building Department
GShapiro@co.kitsap.wa.us
05/29/2020

CHANGES
MUST Be Approved Prior
To Performing Work

Subject To Field Inspection



Sealed 21 April 2020
Edward C. Robison, PE
10012 Creviston DR NW
Cig Harbor, WA 98129
253-858-0855, Fax 253-858-0856

Crystalite Inc.™
SKYLITES • SUNROOMS • RAILINGS

Crystalite Inc.
3307 Cedar St.
Everett, WA 98201

425-259-6000
800-666-8065 (USA)
425-259-6734 (fax)

These drawings are the exclusive property of Crystalite Inc. (Crystalite) and shall not, without Crystalite's consent, be retained, copied, duplicated or used for any purpose or purposes other than as pertain to Crystalite's own performance of the contract or subcontract (or portions thereof) in connection with which the drawings are submitted. Dimensions and other details shown in the drawings are subject to variation or change and Crystalite shall have no liability to any person ordering, purchasing or adapting related materials or work on the basis thereof.

GENERAL NOTES:

1. Curb must be installed per standard framing practices.
2. Curb must provide adequate structural support for all loads applied by skylight system, (including thrusting).
3. Curb must provide adequate structural anchorage of fasteners for skylight system. Field anchorage fasteners, supplied by installer.
4. All fasteners to be stainless steel or aluminum.
5. Exposed fasteners limited to perimeter.
6. All welds to be performed using the T.I.G. process.
7. All structural aluminum extrusions to be 6063 T6.
8. All other aluminum extrusions to be 6063 T5 minimum.
9. All structural members wall thickness minimum 0.125 inches.
10. Isolation between dissimilar metals supplied by installer.
11. Wet seal all splices. Use extra care in sealing frame splices.

NOTE TO CONTRACTOR/ARCHITECT:

1. With the return of one set of these drawings or "NOTIFICATION OF ACCEPTANCE" form marked "ACCEPTABLE AS DRAWN" or "ACCEPTABLE WITH THE NOTED CHANGES AND MODIFICATIONS" and signed, scheduled fabrication will be initiated immediately, based on the dimensions and design as indicated.
2. Crystalite Inc. does NOT include items marked "BY OTHERS" or N.B.C. (NOT BY CRYSTALITE)
3. Verify ALL curb/wall conditions are as shown in ALL Crystalite details.
4. All FLAT GLAZING over interior spaces or sunrooms must be a minimum of 2/12 pitch (9.46 deg.) or greater. Any FLAT GLAZING FRAME over an interior space or sunroom installed at less than a 2/12 pitch shall VOID WARRANTY by Crystalite, Inc.

GLAZING NOTES- PRESSURE CAP FASTENER SIZES

GLASS	THERMOCLEAR	BOLT SIZE
3/16" - 3/8"	OR 6 - 10MM	= 1"
1/2" - 5/8"	OR 16MM	= 1 1/4"
1"	OR 25MM	= 1 3/4"
1 1/4"	OR	= 2"
1 1/2"	OR	= 2 1/4"

FRAME COLOR: BRONZE ANO.

GLAZING TYPE: SEE NOTES ON A/2

MEASURE BY: BY CRYSTALITE

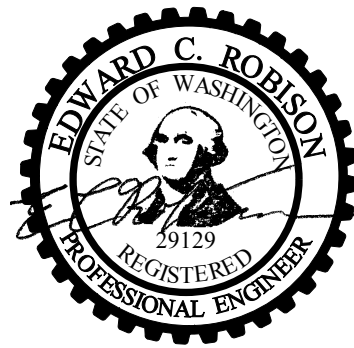
GLAZED BY: FIELD GLAZED

INSTALLATION BY: BY CRYSTALITE

REVISIONS:

DATE:	DESCRIPTION:

JOB NAME:	DEALER NAME:	P.O. #	PROJECT #	SHEET #	DATE:	DRAWN BY:
	BMC WEST	9440NH	C-10812	0	10.28.19	ALEX S.



Sealed 21 April 2020
Edward C. Robison, PE
10012 Creviston DR NW
Gig Harbor, WA 98329
253-858-0855, Fax 253-858-0856



Crystalite Inc.
3307 Cedar St.
Everett, WA 98201
425-259-6000
800-666-6065 (USA)
425-259-6734 (fax)

These drawings are the exclusive property of Crystalite Inc. (Crystalite) and shall not, without Crystalite's consent, be retained, copied, duplicated or used for any purpose or purposes other than as pertain to Crystalite's own performance of the contract or subcontract (or portions thereof) in connection with which the drawings are submitted. Dimensions and other details shown in the drawings are subject to variation or change and Crystalite shall have no liability to any person ordering, purchasing or adapting related materials or work on the basis thereof.

GENERAL NOTES:

1. Curb must be installed per standard framing practices.
2. Curb must provide adequate structural support for all loads applied by skylight system, (including thrusting).
3. Curb must provide adequate structural anchorage of fasteners for skylight system. Field anchorage fasteners, supplied by installer.
4. All fasteners to be stainless steel or aluminum.
5. Exposed fasteners limited to perimeter.
6. All welds to be performed using the T.I.G. process.
7. All structural aluminum extrusions to be 6063 T6.
8. All other aluminum extrusions to be 6063 T5 minimum.
9. All structural members wall thickness minimum .0125 inches.
10. Isolation between dissimilar metals supplied by installer.
11. Wet seal all splices. Use extra care in sealing frame splices.

NOTE TO CONTRACTOR/ARCHITECT:

1. With the return of one set of these drawings or "NOTIFICATION OF ACCEPTANCE" form marked "ACCEPTABLE AS DRAWN" or "ACCEPTABLE WITH THE NOTED CHANGES AND MODIFICATIONS" and signed, scheduled fabrication will be initiated immediately, based on the dimensions and design as indicated.
2. Crystalite Inc. does NOT include items marked "BY OTHERS" or N.B.C. (NOT BY CRYSTALITE)
3. Verify ALL curb/wall conditions are as shown in ALL Crystalite details.
4. All FLAT GLAZING over interior spaces or sunrooms must be a minimum of 2/12 pitch (9.46 deg.) or greater. Any FLAT GLAZING FRAME over an interior space or sunroom installed at less than a 2/12 pitch shall VOID WARRANTY by Crystalite, Inc.

GLAZING NOTES- PRESSURE CAP FASTENER SIZES

GLASS	THERMOCLEAR	BOLT SIZE
3/16" - 3/8"	OR 6 - 10MM	= 1"
1/2" - 5/8"	OR 16MM	= 1 1/4"
1"	OR 25MM	= 1 3/4"
1 1/4"	OR	= 2"
1 1/2"	OR	= 2 1/4"

FRAME COLOR: **BRONZE ANO.**

GLAZING TYPE: **SEE NOTES ON A/2**

MEASURE BY: **BY CRYSTALITE**

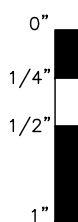
GLAZED BY: **FIELD GLAZED**

INSTALLATION BY: **BY CRYSTALITE**

REVISIONS:

DATE: DESCRIPTION:

JOB NAME:	DEALER NAME:	P.O. #	PROJECT #	SHEET #	DATE:	DRAWN BY:
	BMC WEST	9440NH	C-10812	7	10.28.19	ALEX S.

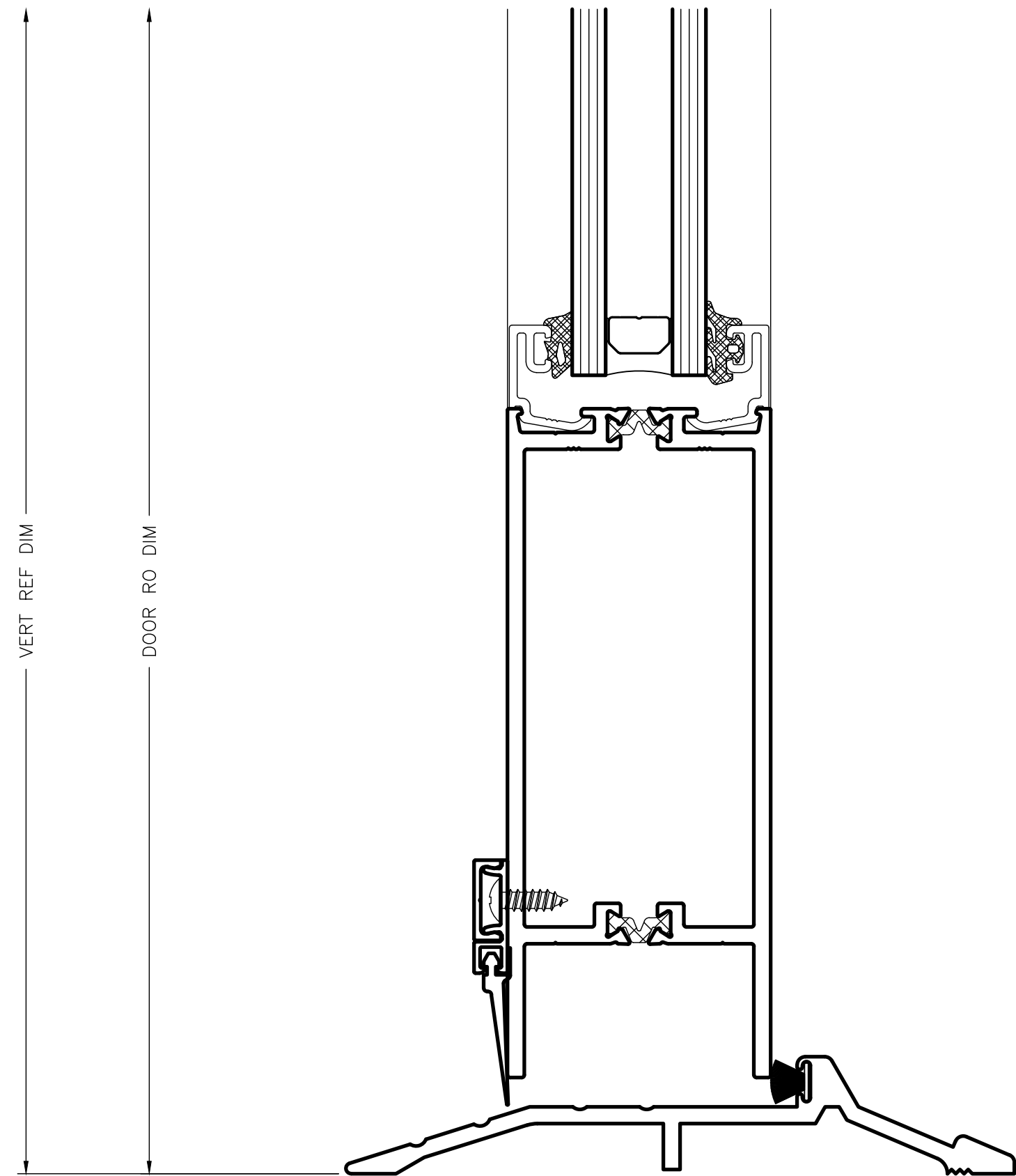
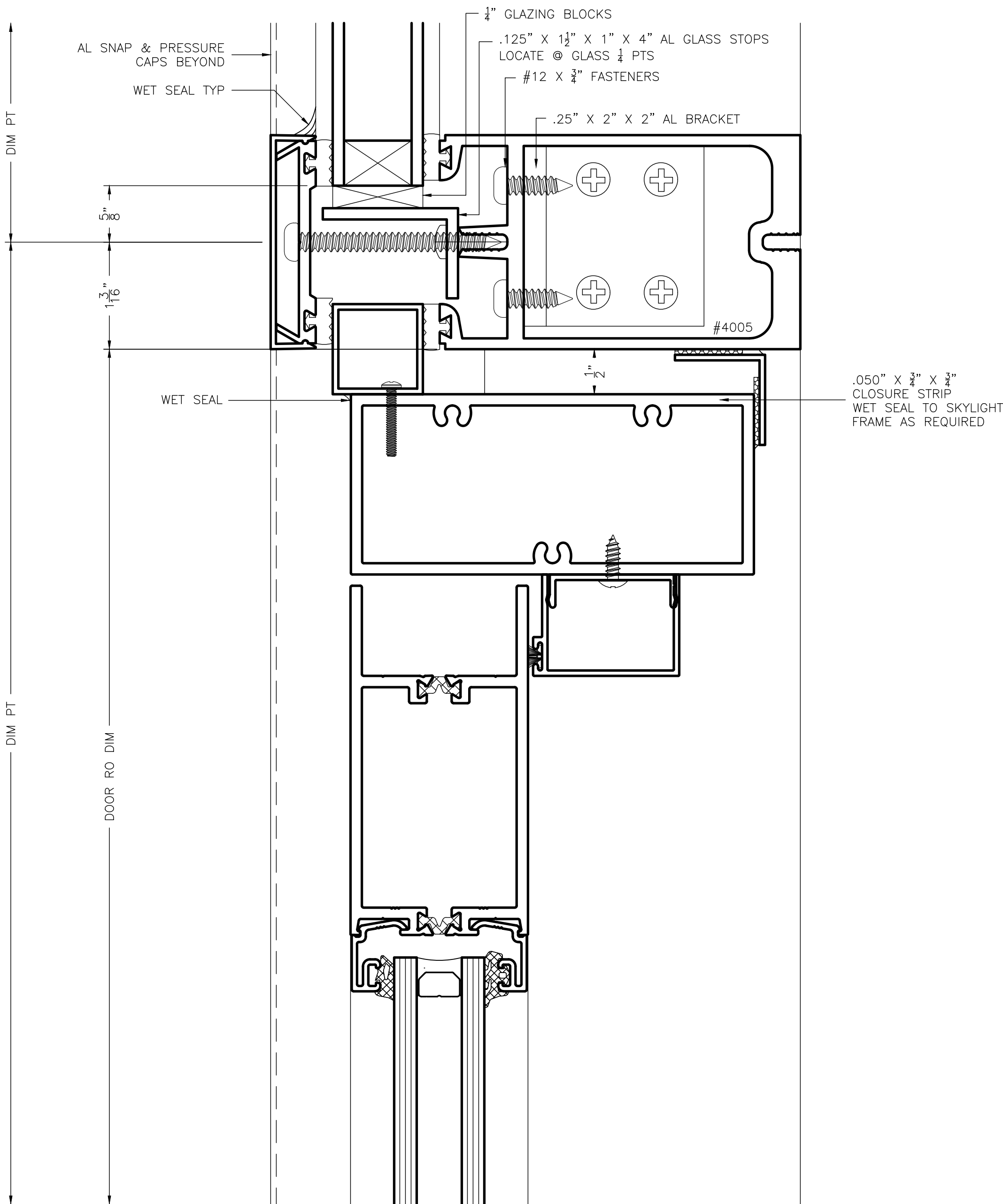


NOTE:
DOOR DETAILS ARE GENERIC
DOOR NOT BY CRYSTALITE

Reviewed for code compliance
with IRC 2015
Kitsap County Building Department
GShapiro@co.kitsap.wa.us
05/29/2020

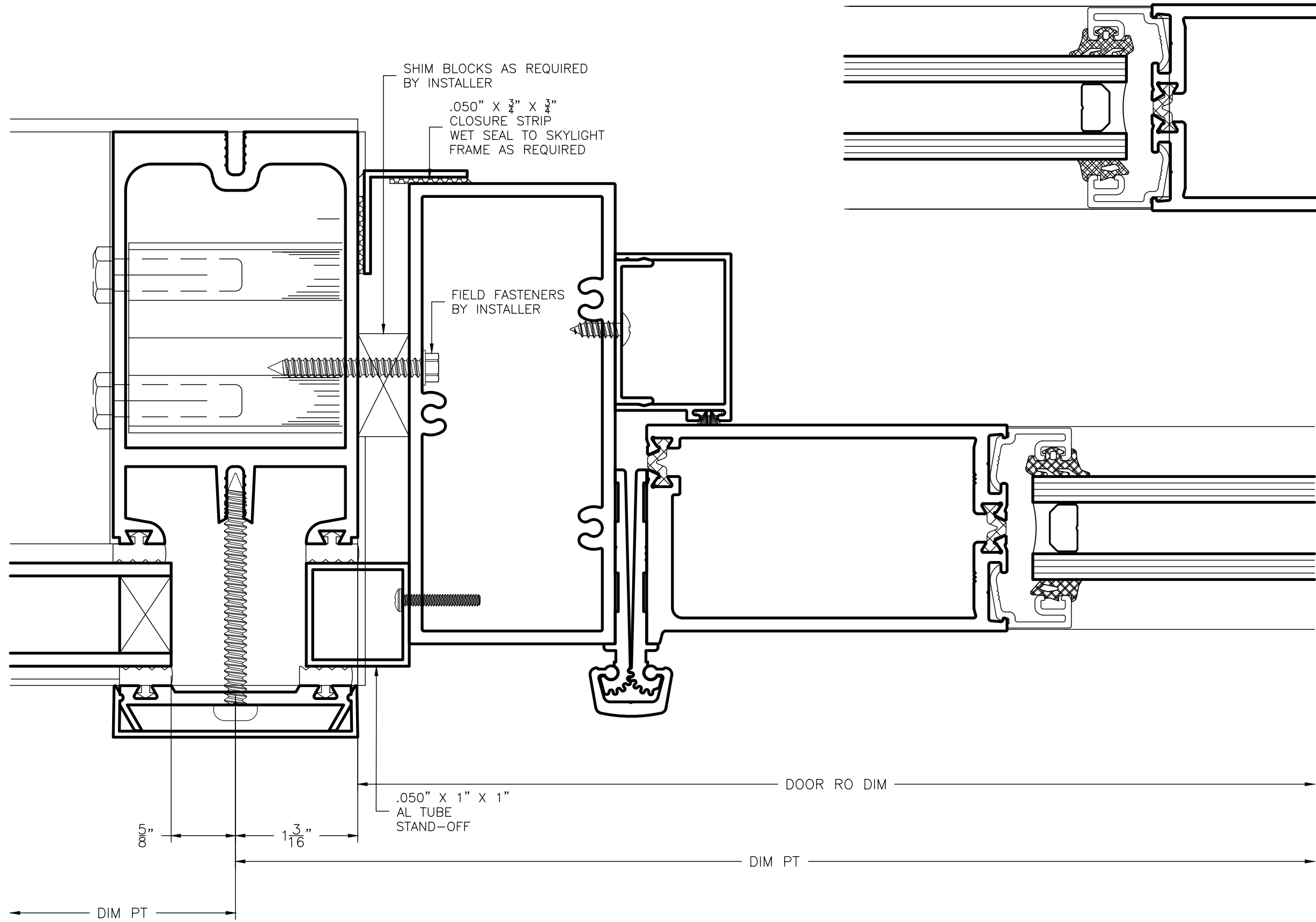
Subject To Field Inspection

CHANGES
MUST Be Approved Prior
To Performing Work

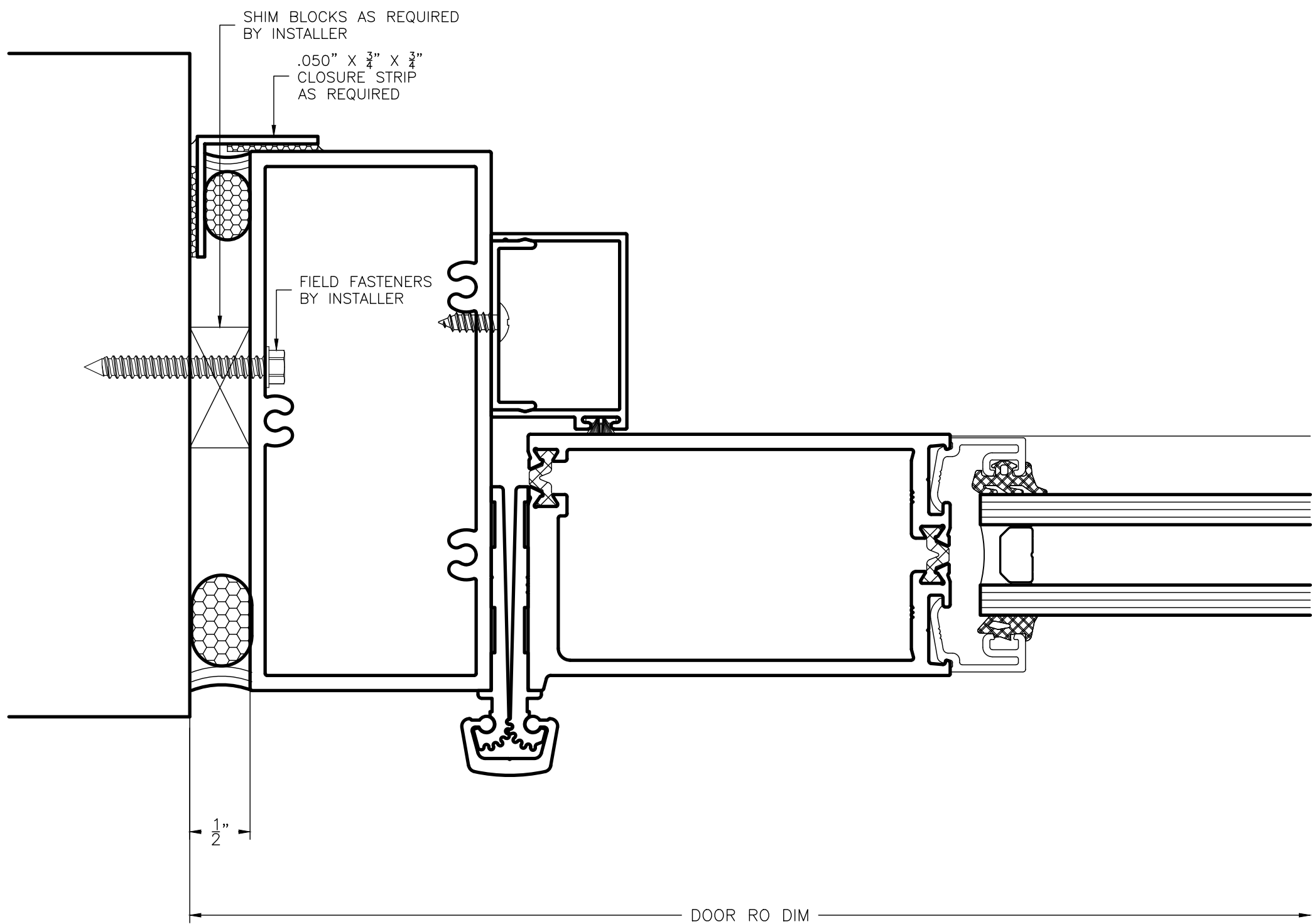


A
7
SUNROOM DOOR
HEADER DETAIL

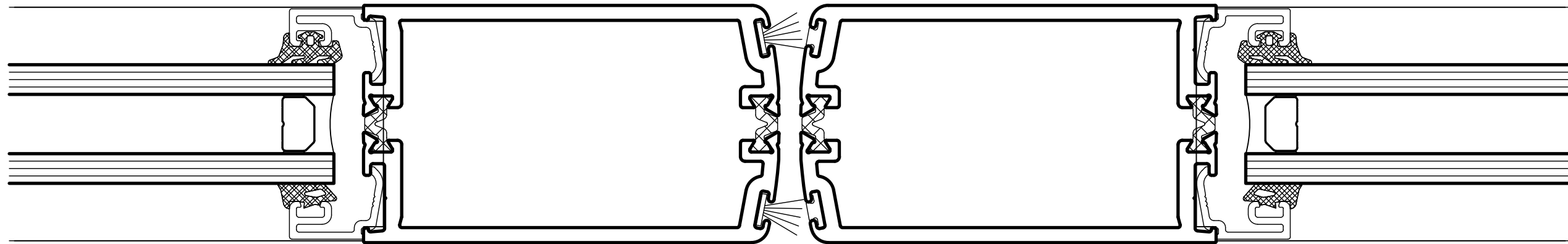
B
7
SUNROOM DOOR
SILL DETAIL



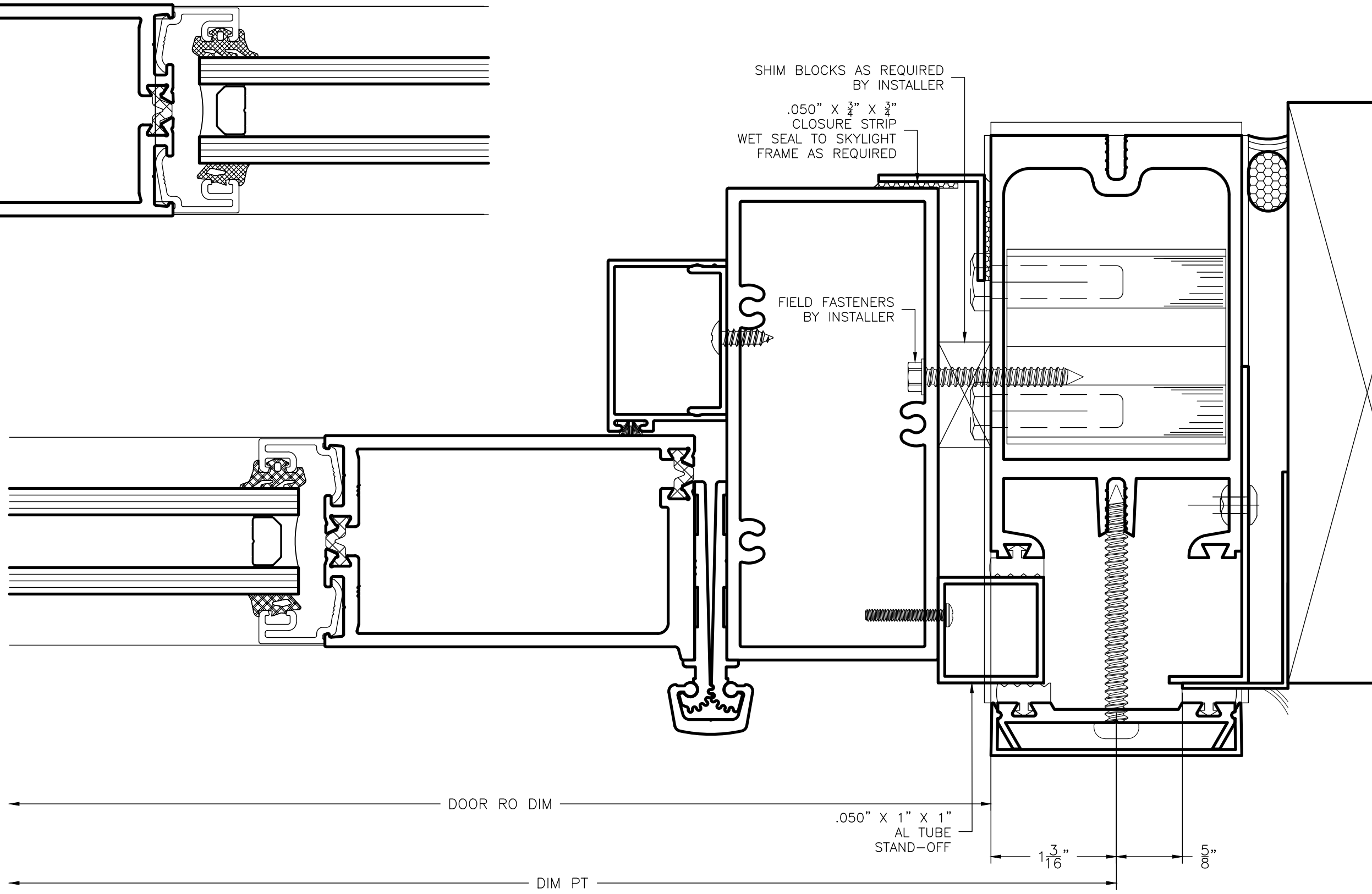
A
8 DOOR JAMB DETAIL



D
8 DOOR JAMB DETAIL



B
8 DOOR DETAIL



C
8 DOOR JAMB DETAIL

NOTE:
DOOR DETAILS ARE GENERIC
DOOR NOT BY CRYSTALITE

Reviewed for code compliance
with IRC 2015
Kitsap County Building Department
GShapiro@co.kitsap.wa.us
05/29/2020

Subject To Field Inspection

CHANGES
MUST Be Approved Prior
To Performing Work



Crystalite Inc.
3307 Cedar St.
Everett, WA 98201
425-259-6000
800-666-6065 (USA)
425-259-6734 (fax)

These drawings are the exclusive property of Crystalite Inc. (Crystalite) and shall not, without Crystalite's consent, be retained, copied, duplicated or used for any purpose or purposes other than as pertain to Crystalite's own performance of the contract or subcontract (or portions thereof) in connection with which the drawings are submitted. Dimensions and other details shown in the drawings are subject to variation or change and Crystalite shall have no liability to any person ordering, purchasing or adapting related materials or work on the basis thereof.

- GENERAL NOTES:**
1. Curb must be installed per standard framing practices.
 2. Curb must provide adequate structural support for all loads applied by skylight system, (including thrusting).
 3. Curb must provide adequate structural anchorage of fasteners for skylight system. Field anchorage fasteners, supplied by installer.
 4. All fasteners to be stainless steel or aluminum.
 5. Exposed fasteners limited to perimeter.
 6. All welds to be performed using the T.I.G. process.
 7. All structural aluminum extrusions to be 6063 T6.
 8. All other aluminum extrusions to be 6063 T5 minimum.
 9. All structural members wall thickness minimum 0.125 inches.
 10. Isolation between dissimilar metals supplied by installer.
 11. Wet seal all splices. Use extra care in sealing frame splices.

- NOTE TO CONTRACTOR/ARCHITECT:**
1. With the return of one set of these drawings or "NOTIFICATION OF ACCEPTANCE" form marked "ACCEPTABLE AS DRAWN" or "ACCEPTABLE WITH THE NOTED CHANGES AND MODIFICATIONS" and signed, scheduled fabrication will be initiated immediately, based on the dimensions and design as indicated.
 2. Crystalite Inc. does NOT include items marked "BY OTHERS" or N.B.C. (NOT BY CRYSTALITE)
 3. Verify ALL curb/wall conditions are as shown in ALL Crystalite details.
 4. All FLAT GLAZING over interior spaces or sunrooms must be a minimum of 2/12 pitch (9.46 deg.) or greater. Any FLAT GLAZING FRAME over an interior space or sunroom installed at less than a 2/12 pitch shall VOID WARRANTY by Crystalite, Inc.

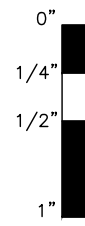
GLAZING NOTES- PRESSURE CAP FASTENER SIZES			
GLASS	THERMOCLEAR	BOLT SIZE	
3/16" - 3/8"	OR	6 - 10MM	= 1"
1/2" - 5/8"	OR	16MM	= 1 1/4"
1"	OR	25MM	= 1 3/4"
1 1/4"	OR		= 2"
1 1/2"	OR		= 2 1/4"

FRAME COLOR:	BRONZE ANO.
GLAZING TYPE:	SEE NOTES ON A/2
MEASURE BY:	BY CRYSTALITE
GLAZED BY:	FIELD GLAZED
INSTALLATION BY:	BY CRYSTALITE

REVISIONS:	
DATE:	DESCRIPTION:



Sealed 21 April 2020
Edward C. Robinson, PE
10012 Crevision DR NW
Gig Harbor, WA 98329
253-858-0855, Fax 253-858-0856



JOB NAME:	DEALER NAME:	P.O. #	PROJECT #	SHEET #	DATE:	DRAWN BY:
	BMC WEST	9440NH	C-10812	∞	10.28.19	ALEX S.